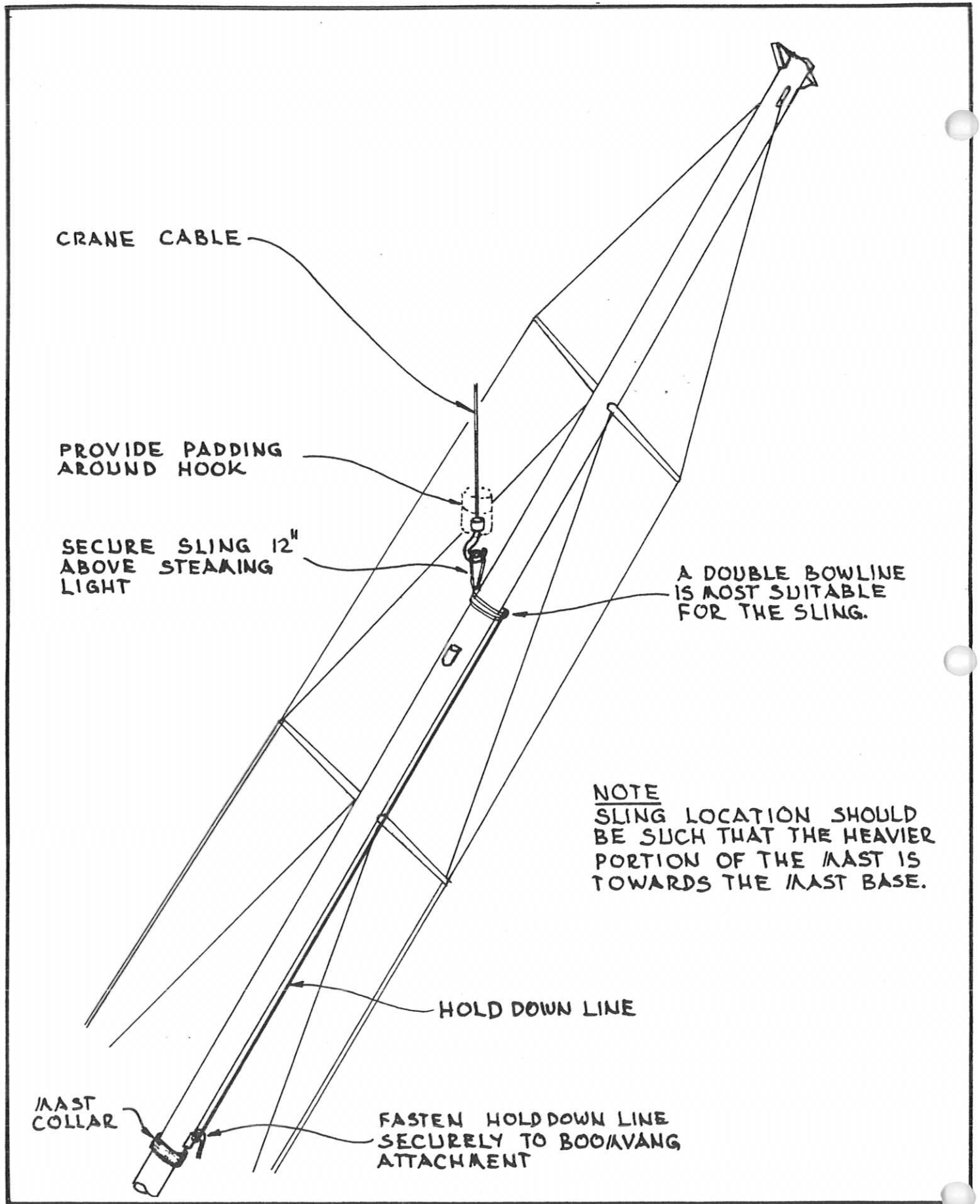



# HALLING SLING LOCATION

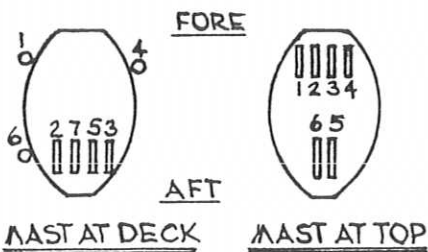
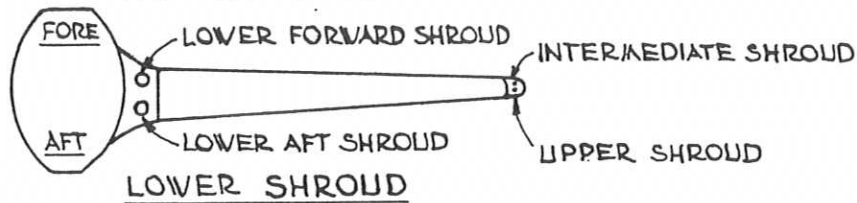
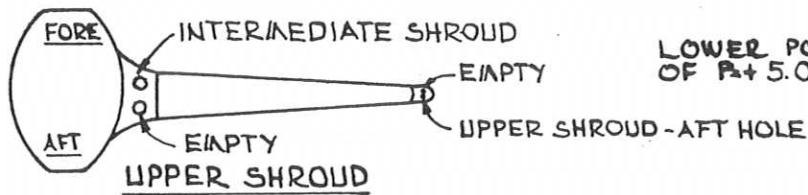
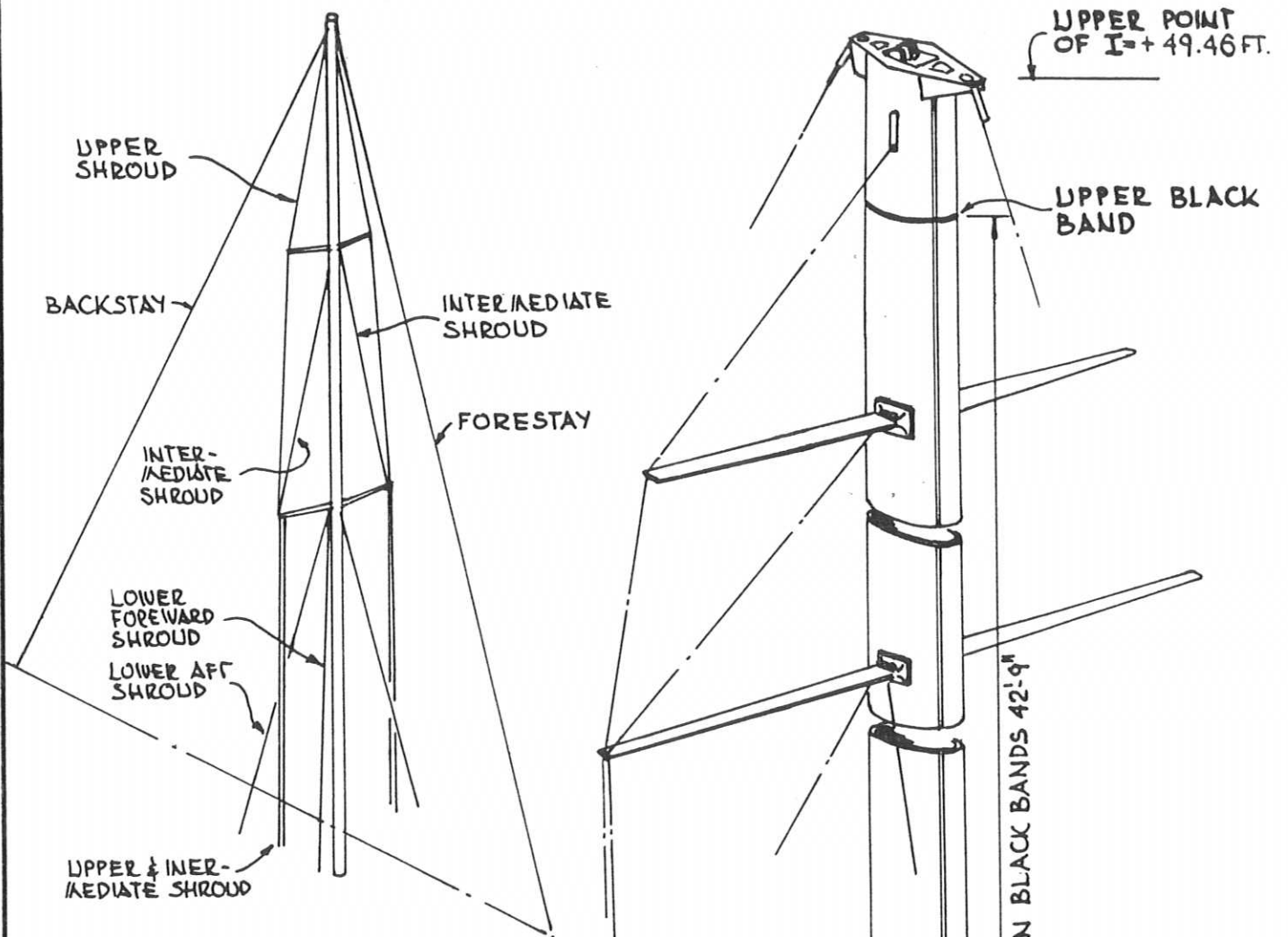
DWG. No

1



**NOTE**  
 SLING LOCATION SHOULD  
 BE SUCH THAT THE HEAVIER  
 PORTION OF THE MAST IS  
 TOWARDS THE MAST BASE.

	<p><b>MAST SLING LOCATION</b></p>	<p>DWG. No  <b>2</b></p>
---	-----------------------------------	------------------------------



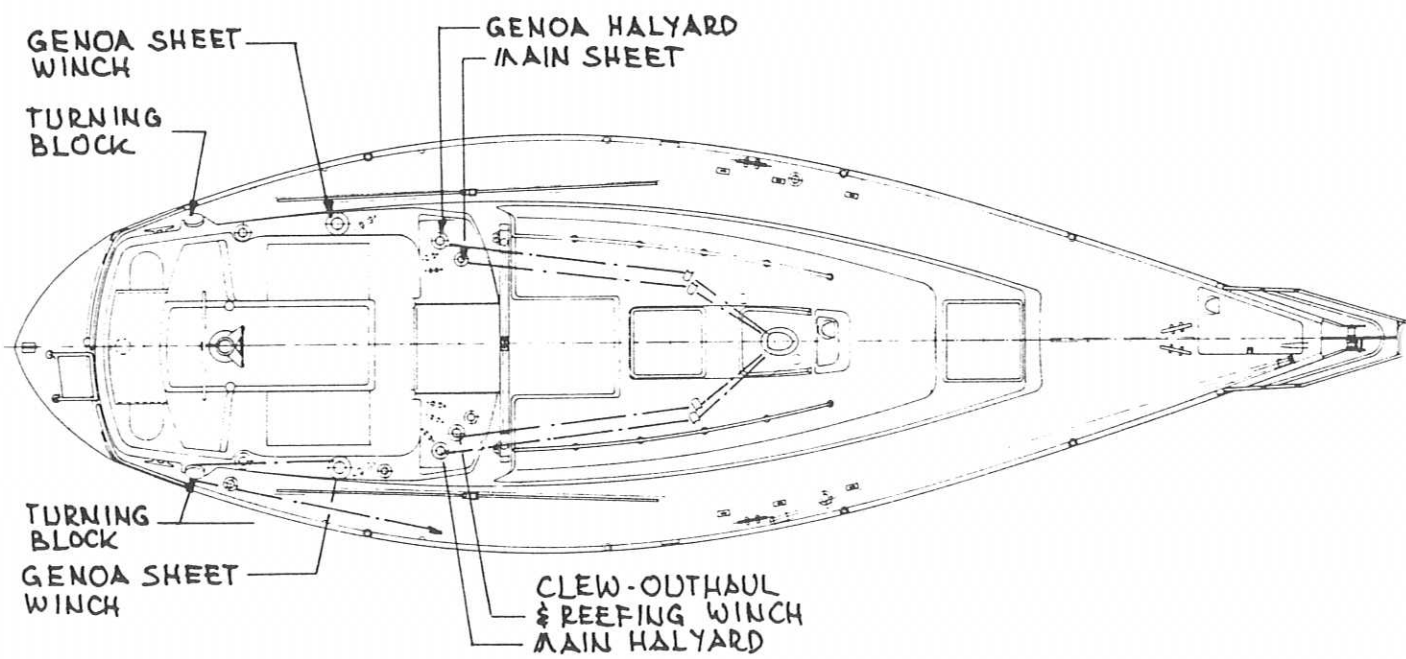
- 1 SPINNAKER #2
- 2 GENOA #1
- 3 GENOA #2
- 4 SPINNAKER #1
- 5 MAIN HALYARD
- 6 MAIN TOPPING LIFT
- 7 POLE TOPPING LIFT



# MAST & RIGGING LAYOUT

DWG. No

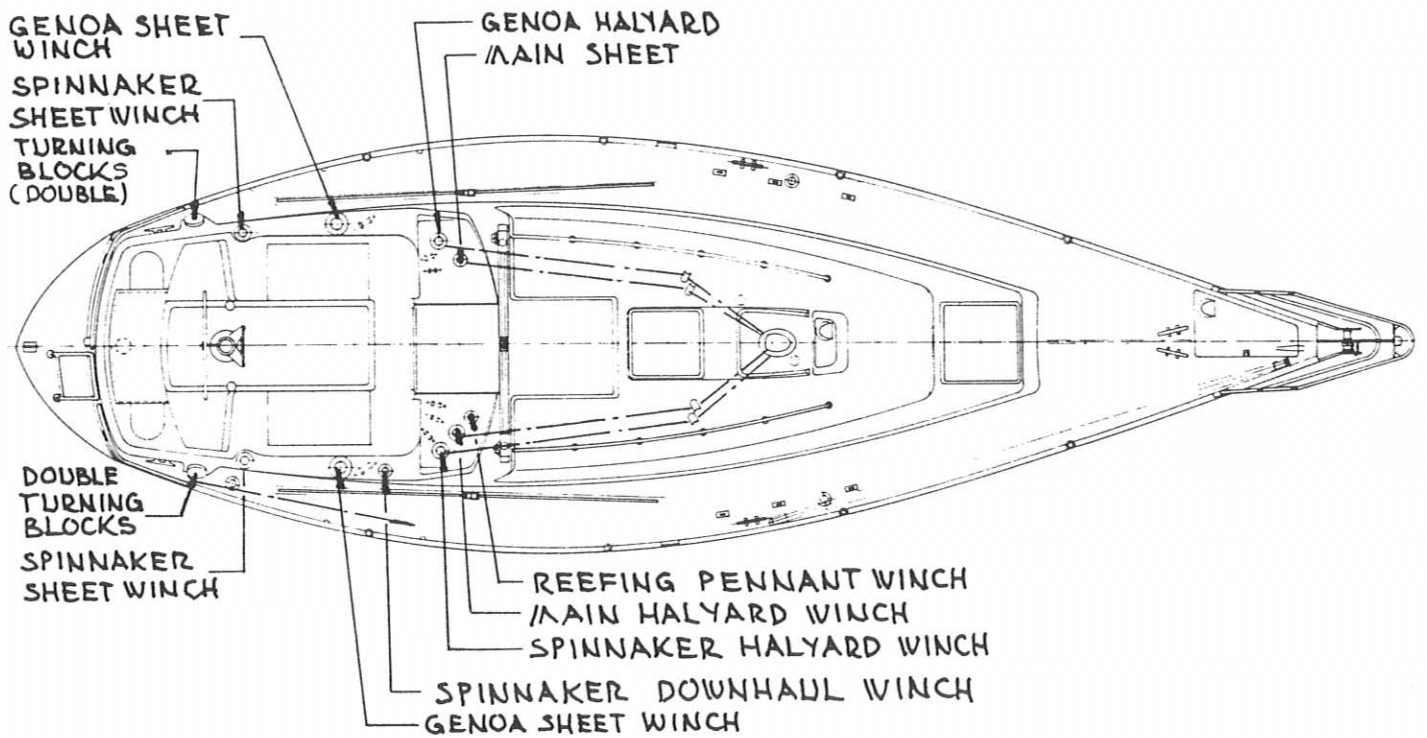
3



**STANDARD HALYARD ARRANGEMENT**

DWG. No

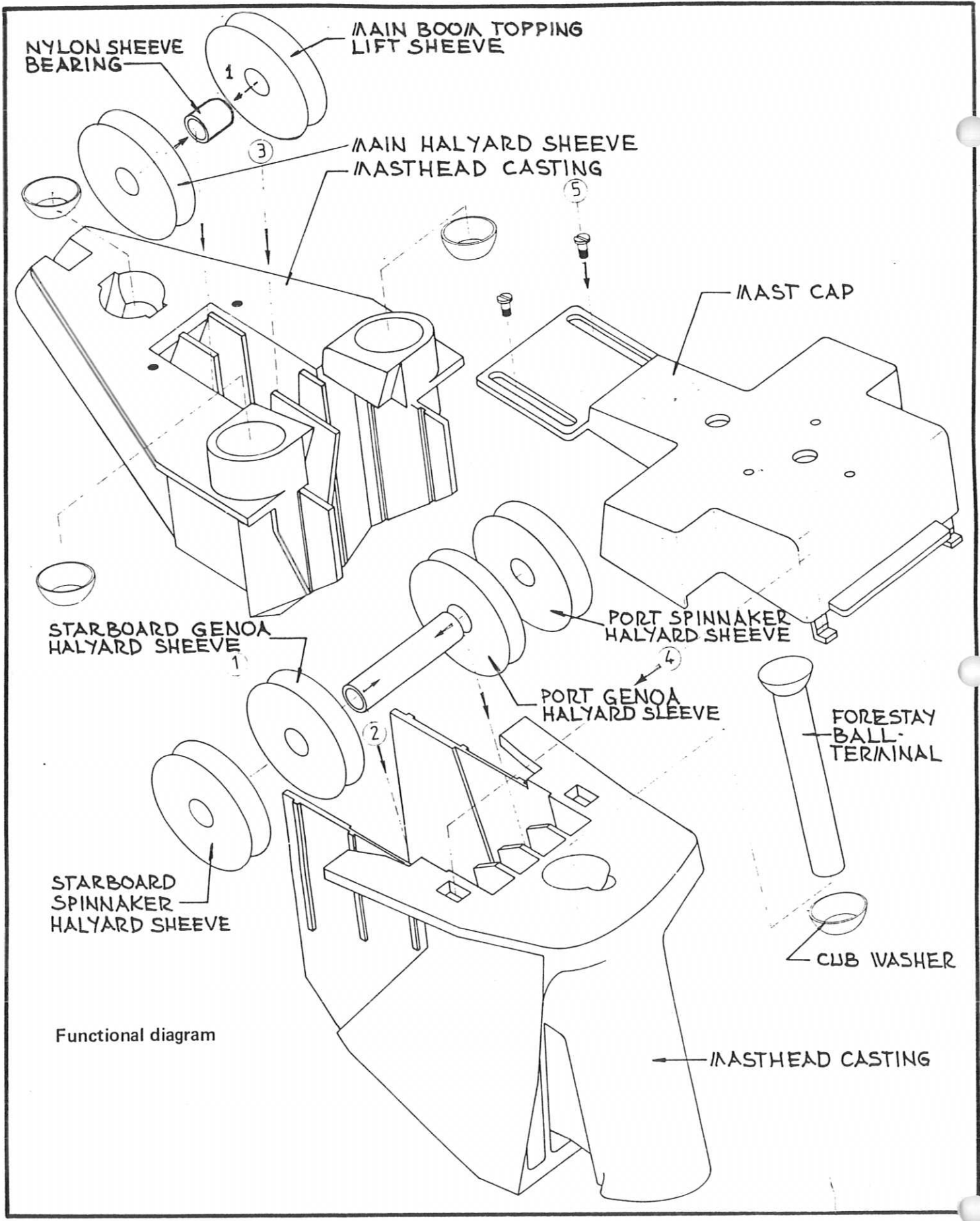
**4**



**STANDARD ARRANGEMENT  
FOR OPTIONAL HALYARDS**

DWG. No

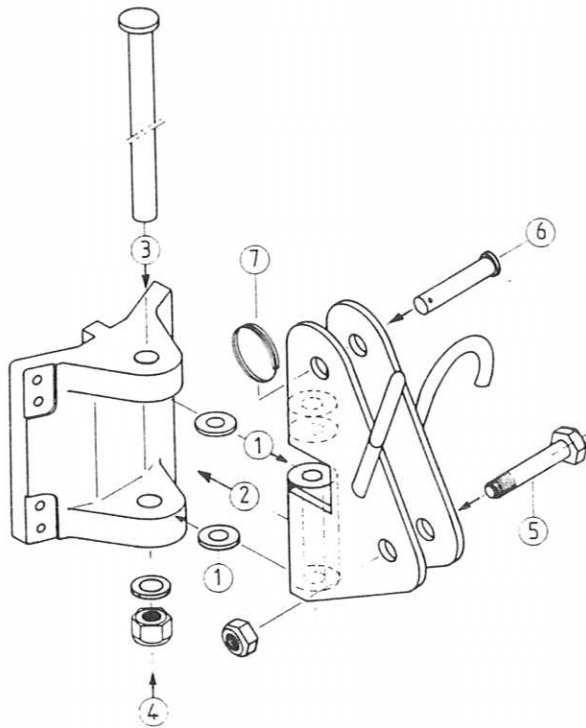
**5**



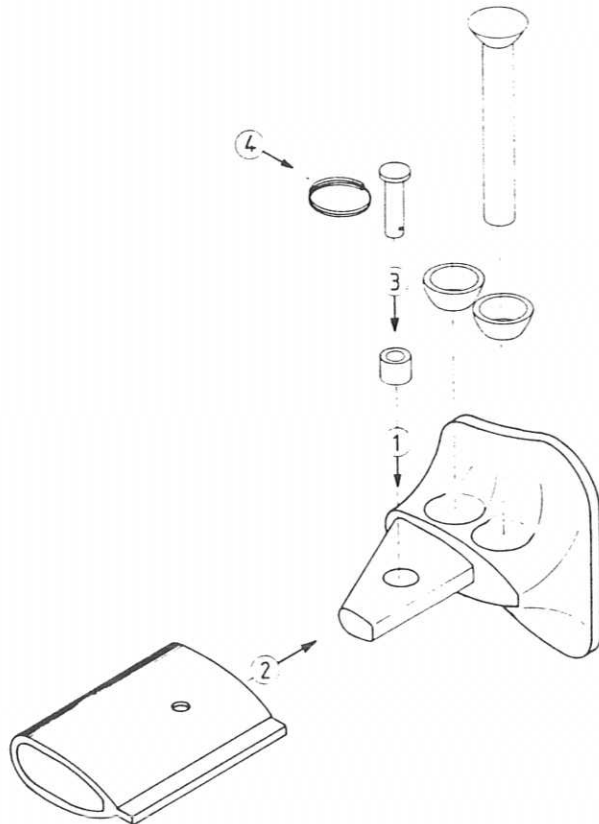
# MASTHEAD DETAIL

DWG. No

6

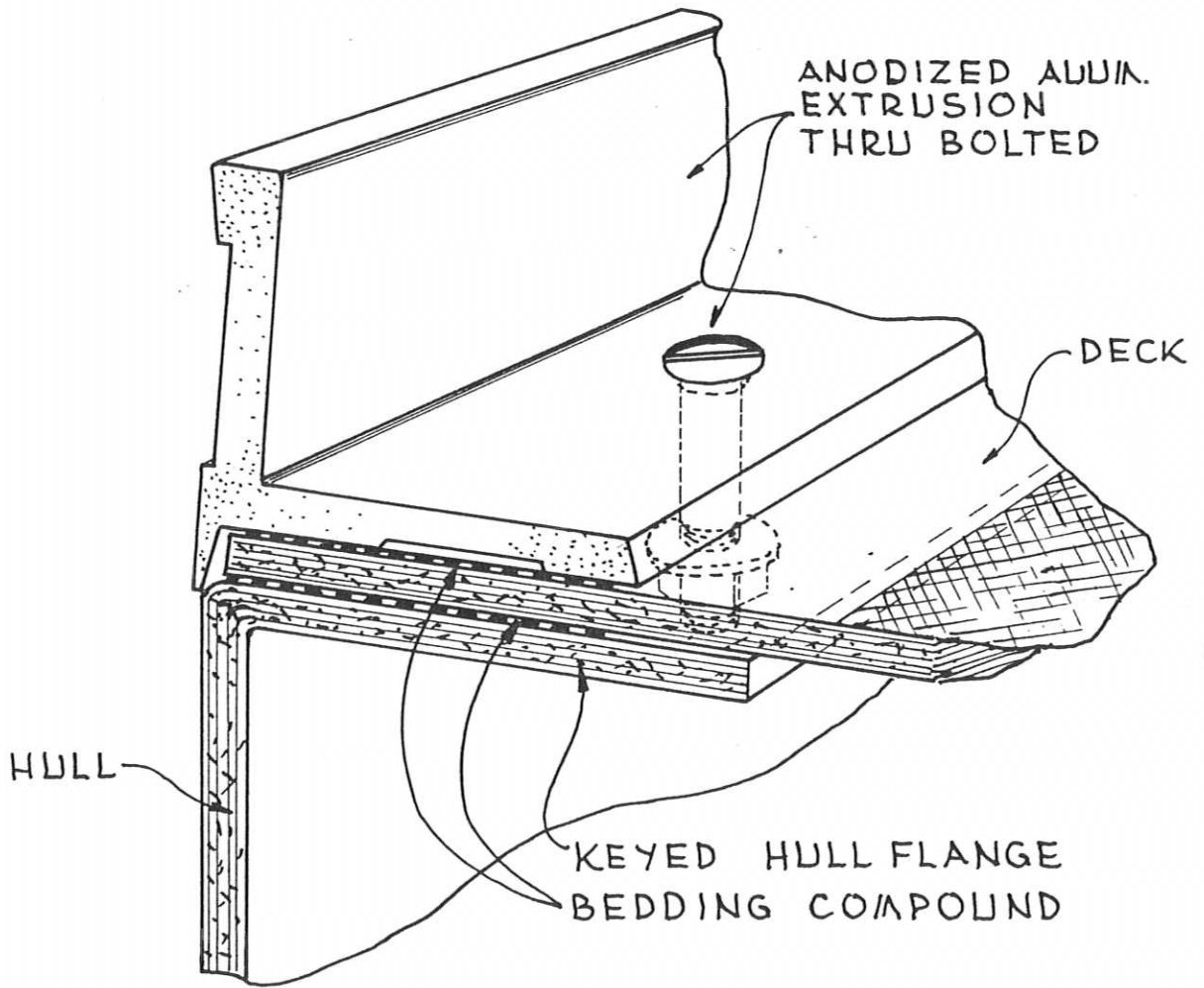


- 554307 Gooseneck slider NG II  
*Curseur vit de mulet NG II*
- 920012 Gooseneck toggle  
*Chappe cardan de vit de mulet*
- 002229 Clevis pin  $\emptyset$  0,39 x 5,11  
*Axe percé  $\emptyset$  10 x 130*
- 664106 Washer  $\emptyset$  0,40  
*Rondelles  $\emptyset$  10,3*
- 921103 Screw  $\emptyset$  0,39 x 1,57  
*Vis  $\emptyset$  10 x 40*
- 301310 Nylstop nut  $\emptyset$  0,39  
*Ecrou nylstop  $\emptyset$  10*
- 001048 Clevis pin  $\emptyset$  0,39  
*Axe percé  $\emptyset$  10 x 38*
- 261027 Open ring  
*Anneau brisé*



- **BF 5** Profile NG 70 - 105  
*Profil NG 70 - 105*
- 555313 Right bracket  
*Platine droite*
- 555314 Left bracket  
*Platine gauche*
- 001051 Clevis pin  $\emptyset$  0,47 x 1,73  
*Axe percé  $\emptyset$  12 x 44*
- 151164 Shock absorber  $\emptyset$  1,10 x 0,94  
*Amortisseur  $\emptyset$  28 x 24*
- 261027 Open ring large  
*Anneau brisé GM*

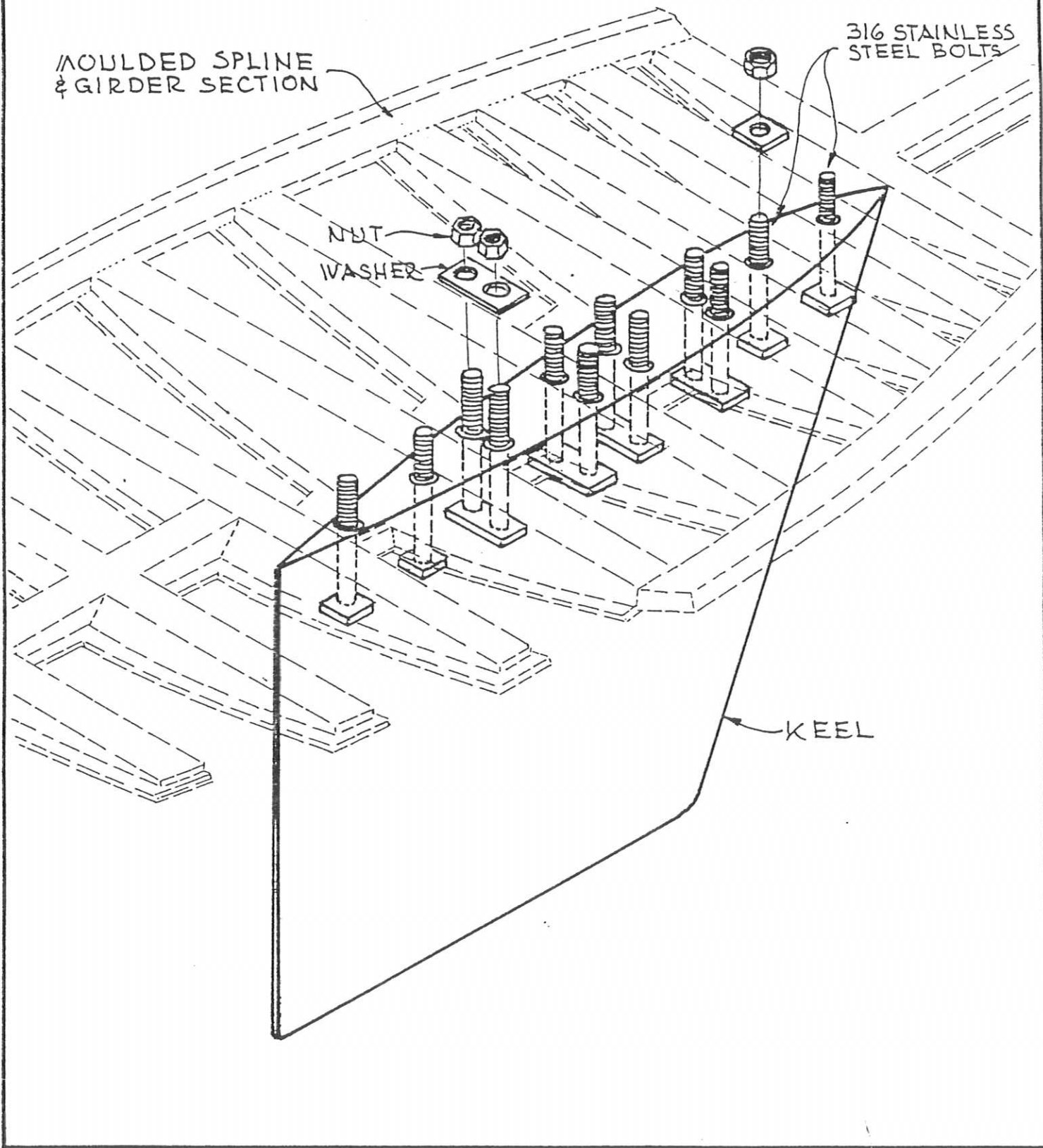




# DECK/HULL JOINT

DWG. No

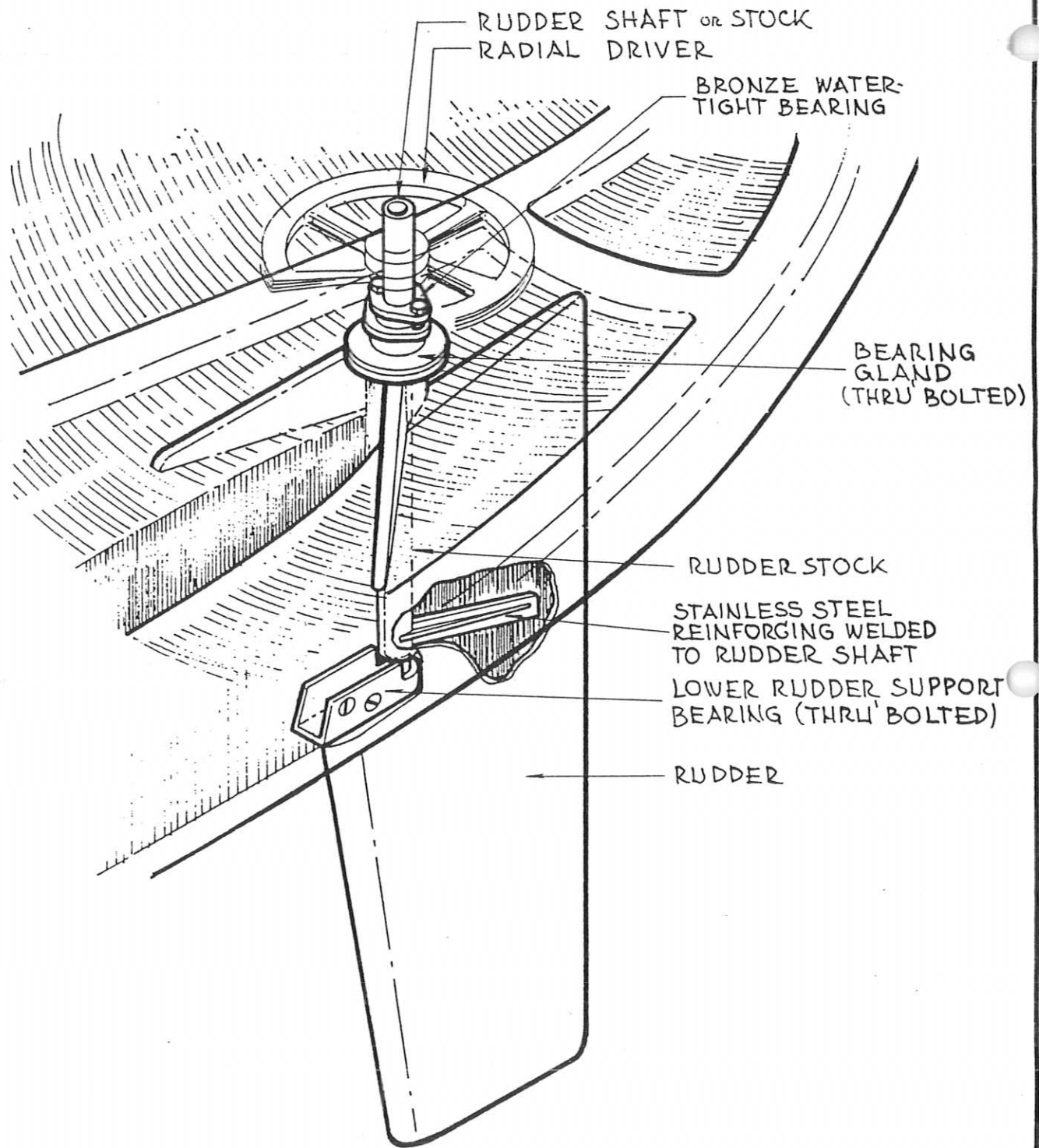
8



# KEEL CONNECTION

DWG. No

9

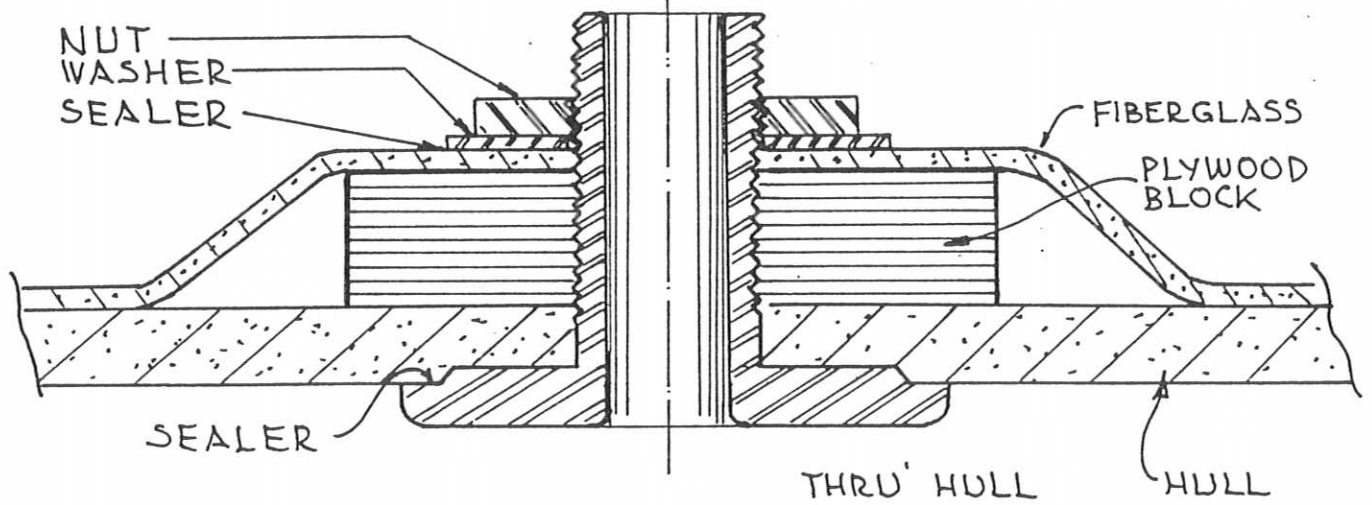
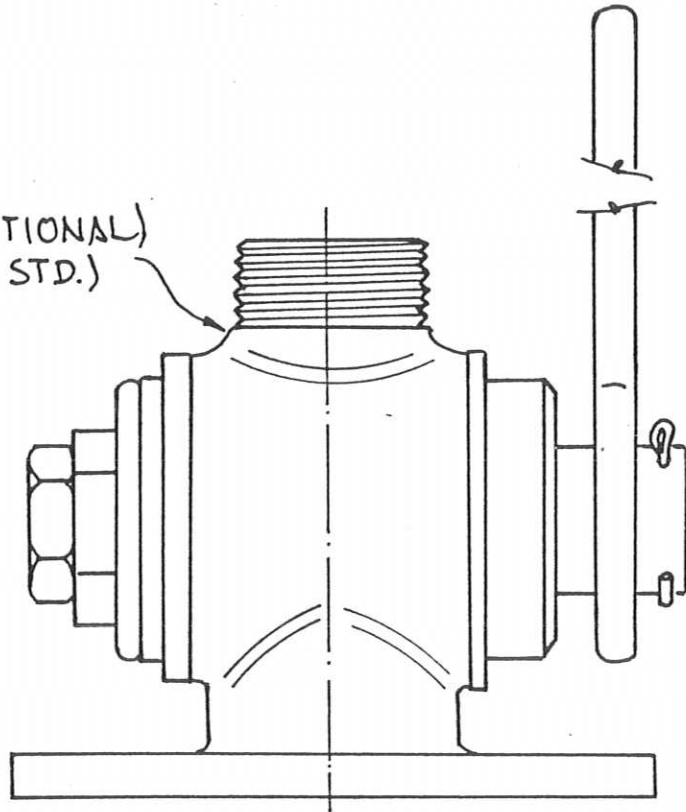


# RUDDER SHAFT

DWG. No

10

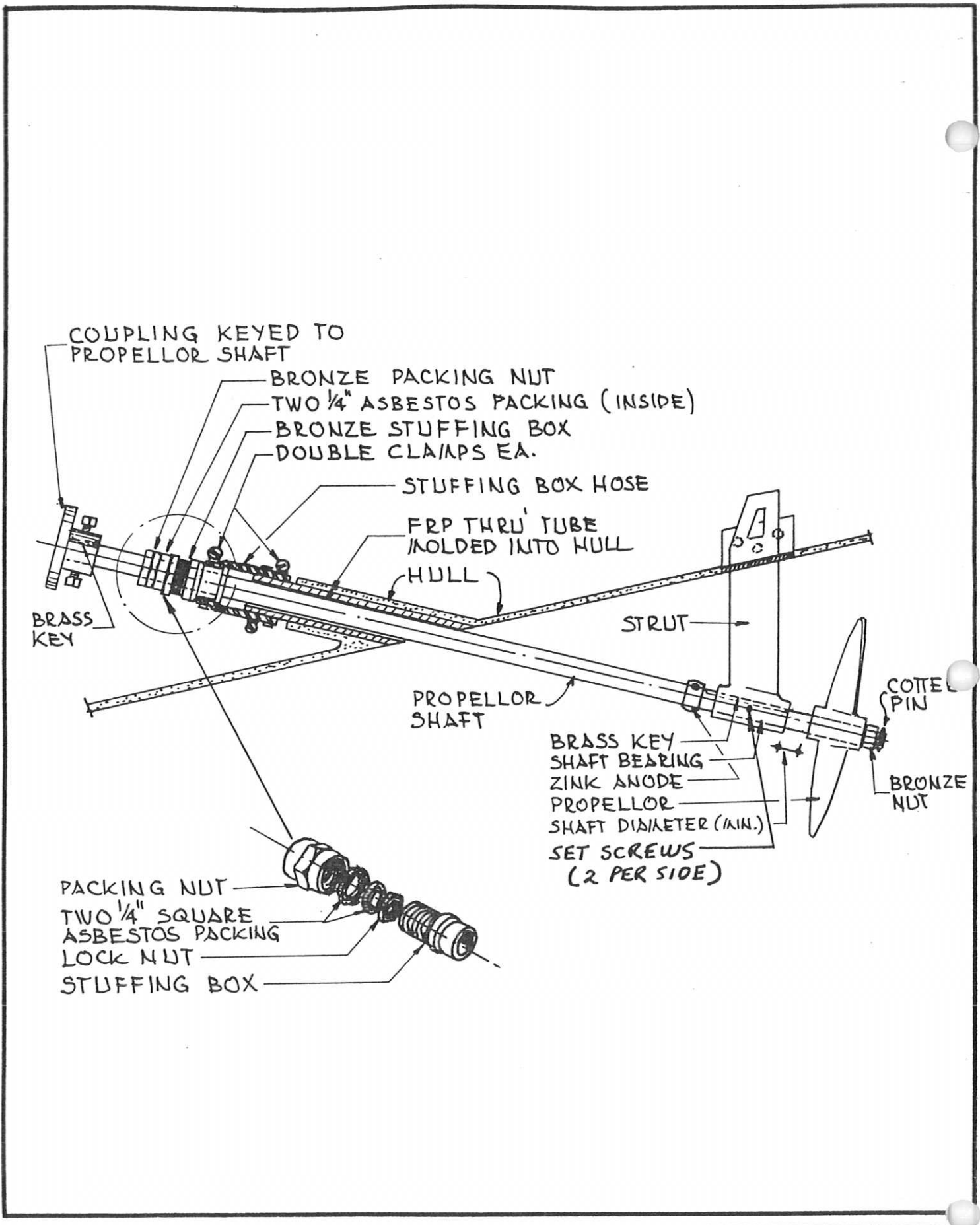
SEACOCK (OPTIONAL)  
GATE VALVE (STD.)



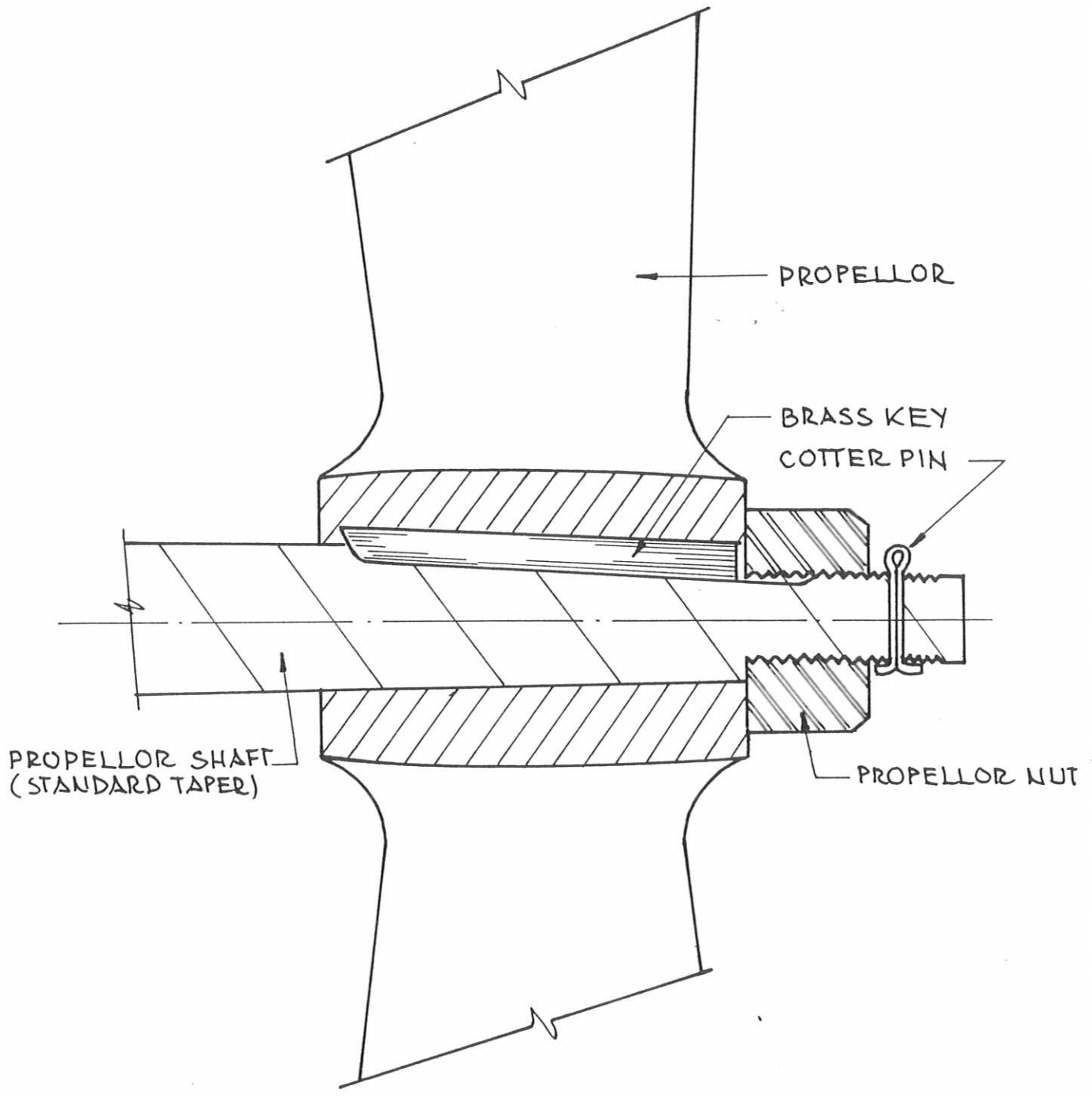
# THROUGH HULL FITTING

DWG. No

11



	<h1>PROPELLOR SHAFT SEALS (STUFFING BOX)</h1>	<p>DWG. No <b>12</b></p>
---	---	------------------------------



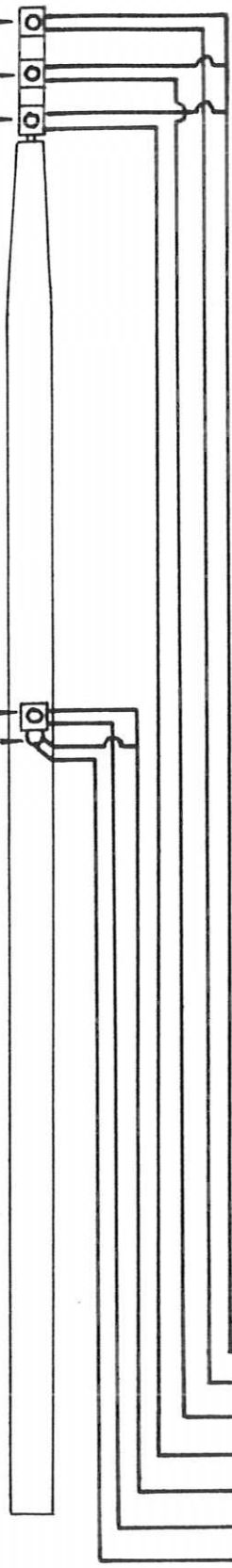
**STANDARD 2-BLADE PROPELLOR**

DWG.No

**13**

STROBE (OPTIONAL) —○—  
 TRICOLOUR (OPTIONAL) —○—  
 ANCHOR LIGHT —○—

STEAMING LIGHT —○—  
 DECK LIGHT —○—



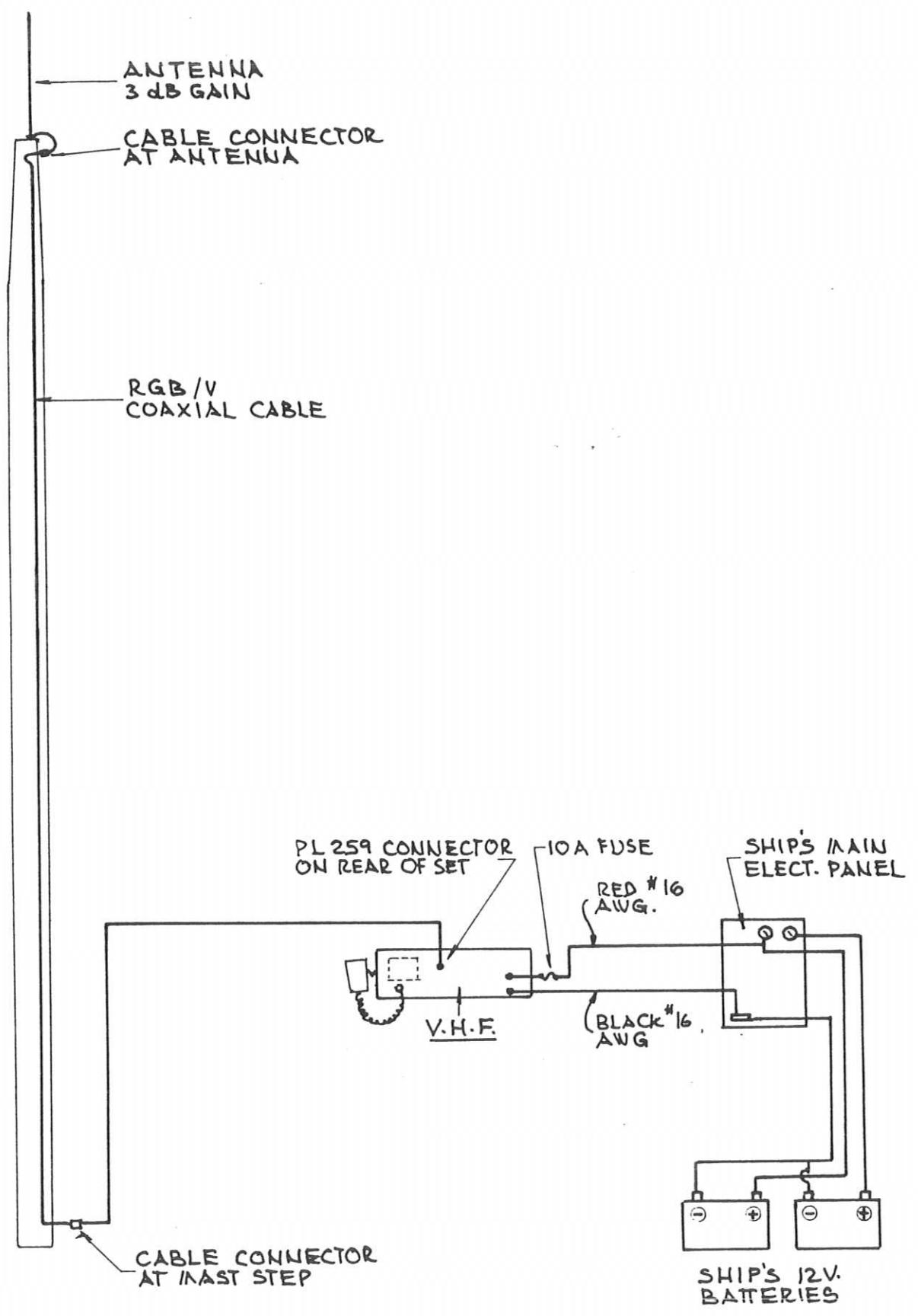
WH. COMMON GROUND  
 R STROBE LIGHT  
 G TRICOLOUR LIGHT  
 BL ANCHOR LIGHT  
 GR/Y COMMON GROUND  
 BL STEAMING LIGHT  
 BR DECK LIGHT



# MAST LIGHTING SYSTEM

DWG. No

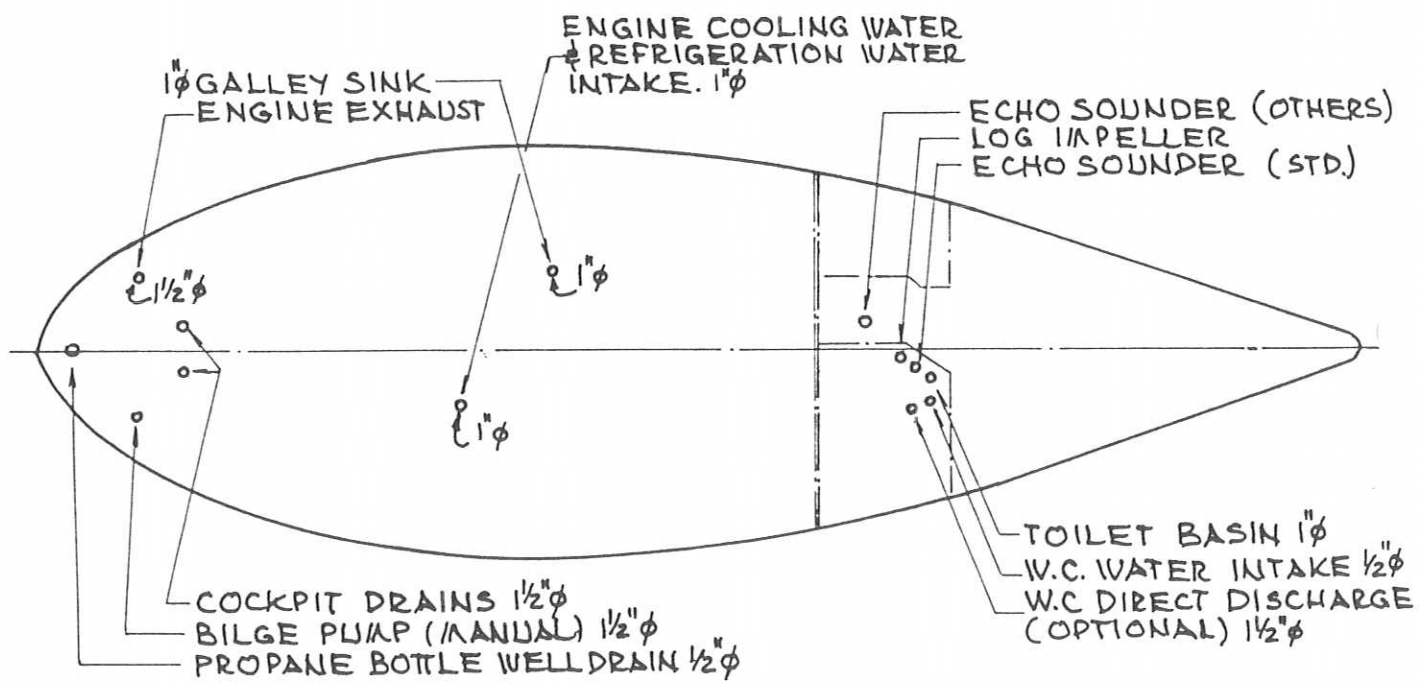
14



# V. H. F. CONNECTIONS

DWG.No

15



# THROUGH HULL LOCATIONS

DWG. NO

16

5/8" VENT &  
HOSE

GROUND TO ENGINE BLOCK  
ENGINE  
FUEL INJECTOR PUMP

PRIMARY FILTER

FUEL LIFT PUMP

5/16"  $\phi$   
FUEL GAUGE ON  
SHIP'S ELECT. PANEL

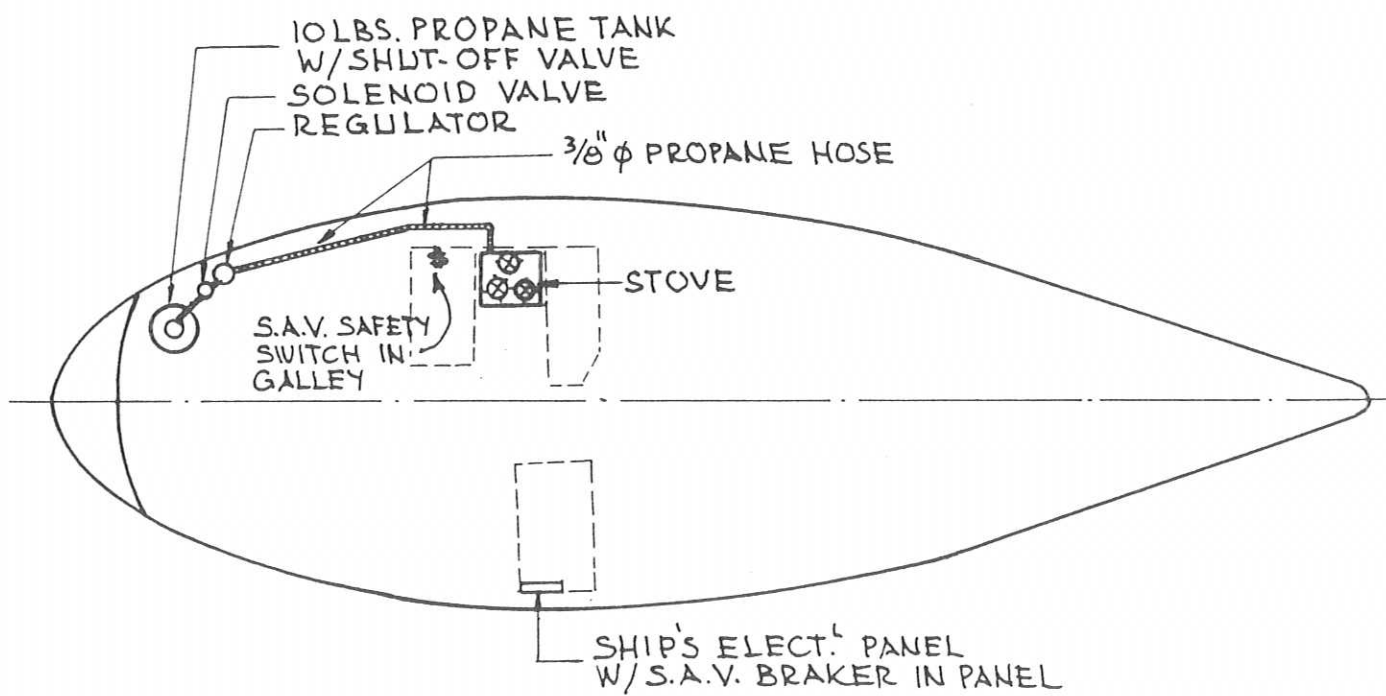
WATER SEPARATOR & SEDIMENT FILTER  
FUEL SHUT-OFF VALVE (OPTIONAL)  
FUEL GAUGE SENDING UNIT  
FUEL FILL HOSE 1/2"  $\phi$  & DECK PLATE



# FUEL TANK INSTALLATION

DWG. No

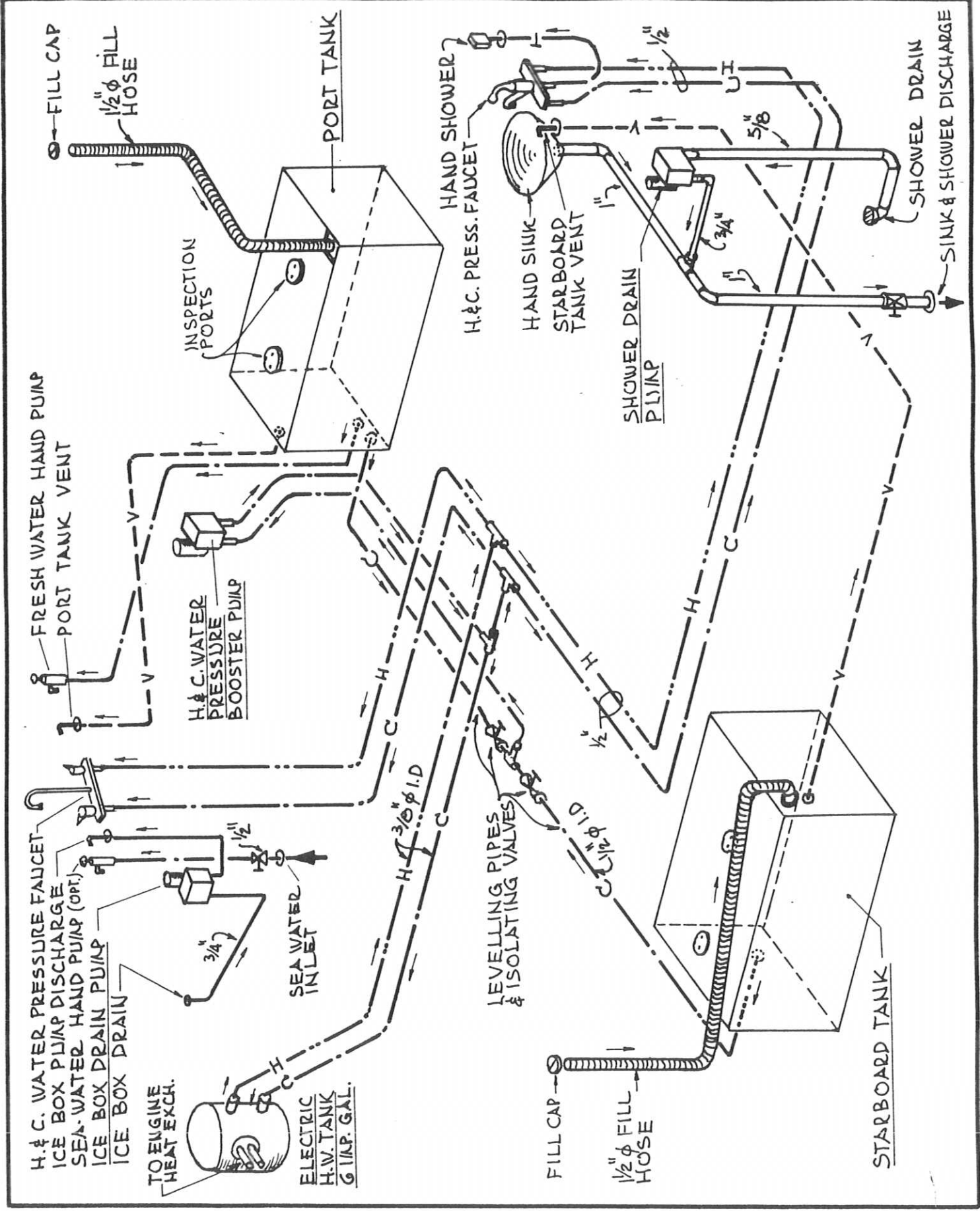
17



**PROPANE SYSTEM WITH S.A.V.**

DWG. No

**18**



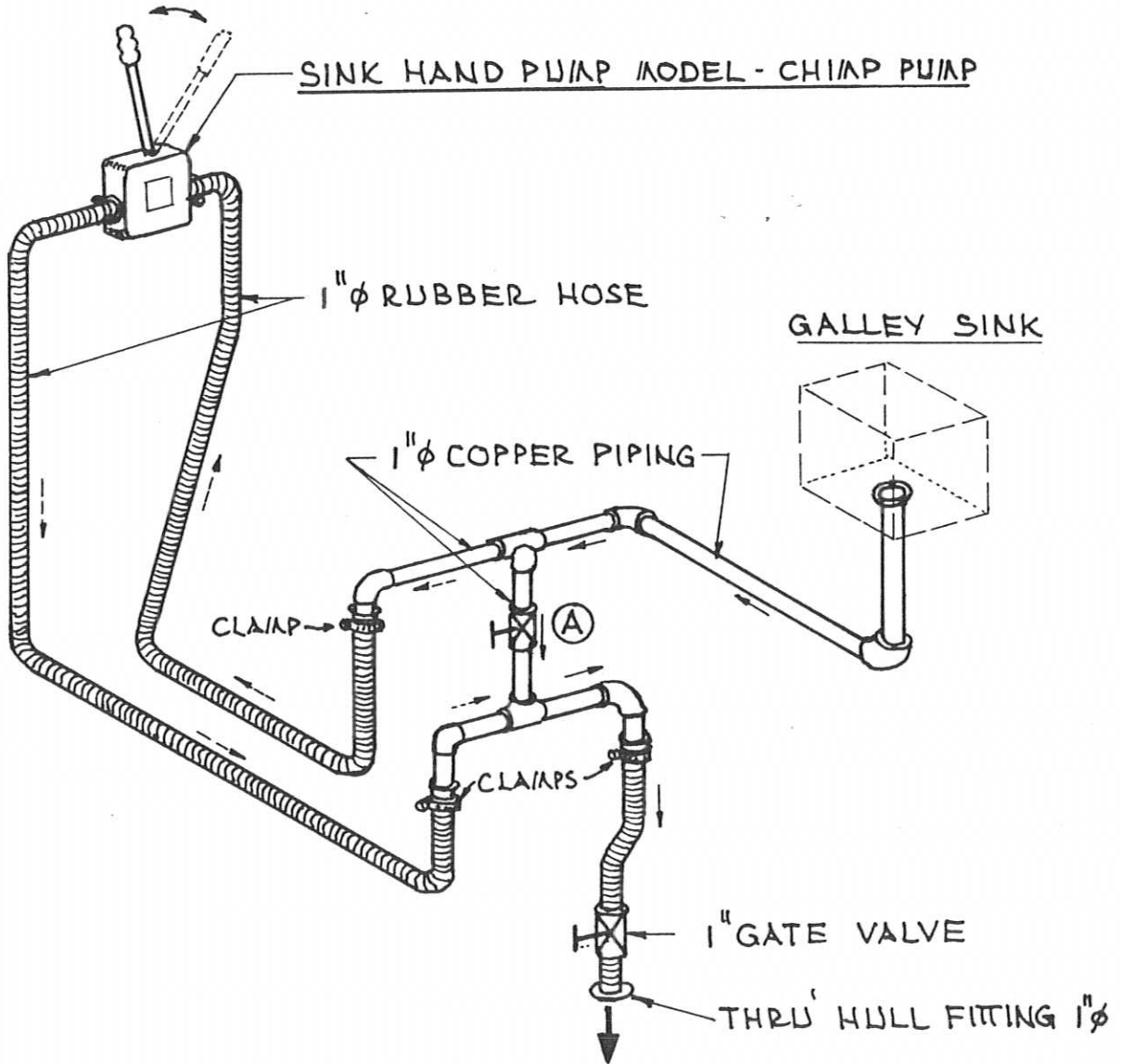
# HOT & COLD WATER PRESSURE-SHOWER SYSTEM

DWG. No

19

NOTE

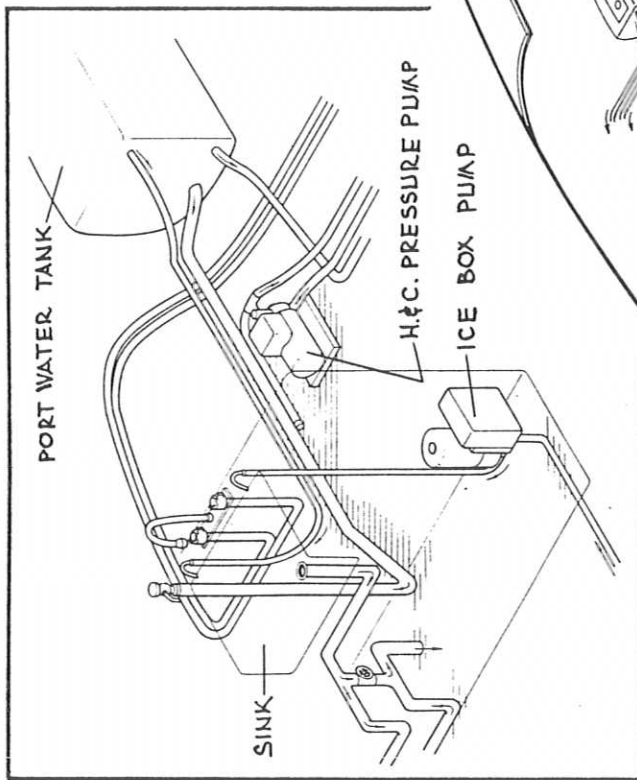
FOR EMPTYING GALLEY SINK  
ON A PORT TACK, CLOSE VALVE "A"  
AND USE HAND PUMP.



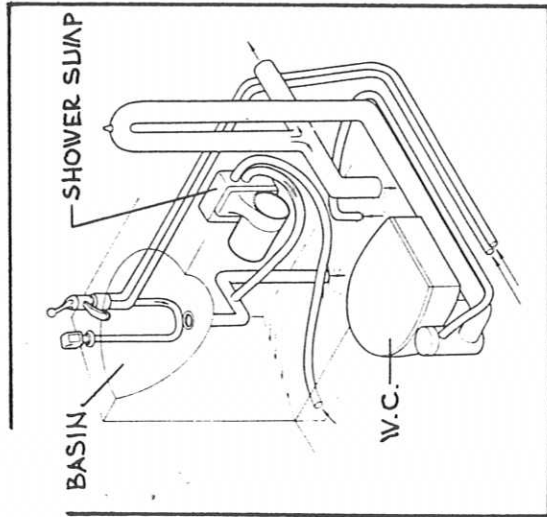
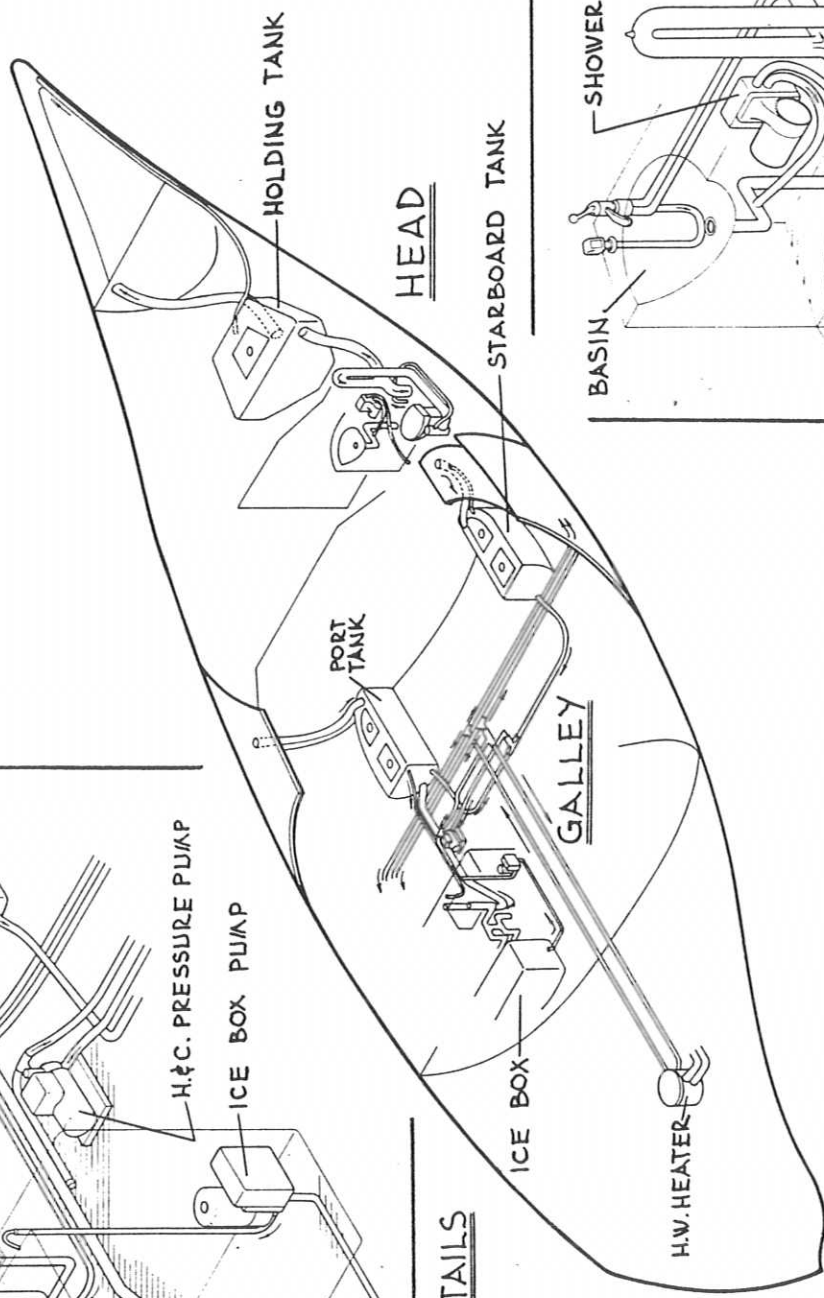
HAND PUMP SYSTEM  
FOR GALLEY SINK

DWG. NO

20



PLUMBING DETAILS AT GALLEY



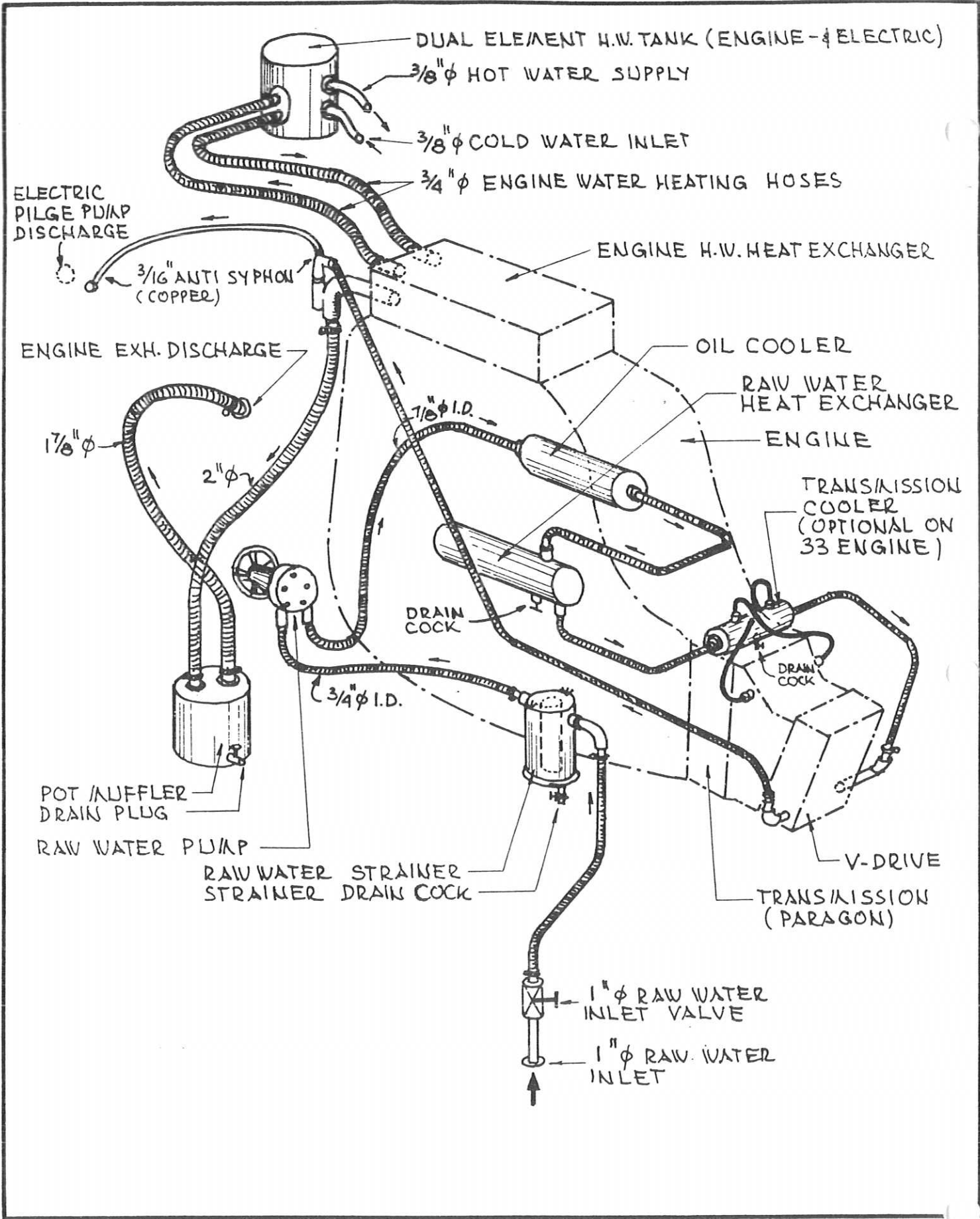
PLUMBING DETAILS AT HEAD

TYPICAL DRAIN, HOT & COLD PIPING LAYOUT



# ISOMETRIC VIEW OF PLUMBING SYSTEM

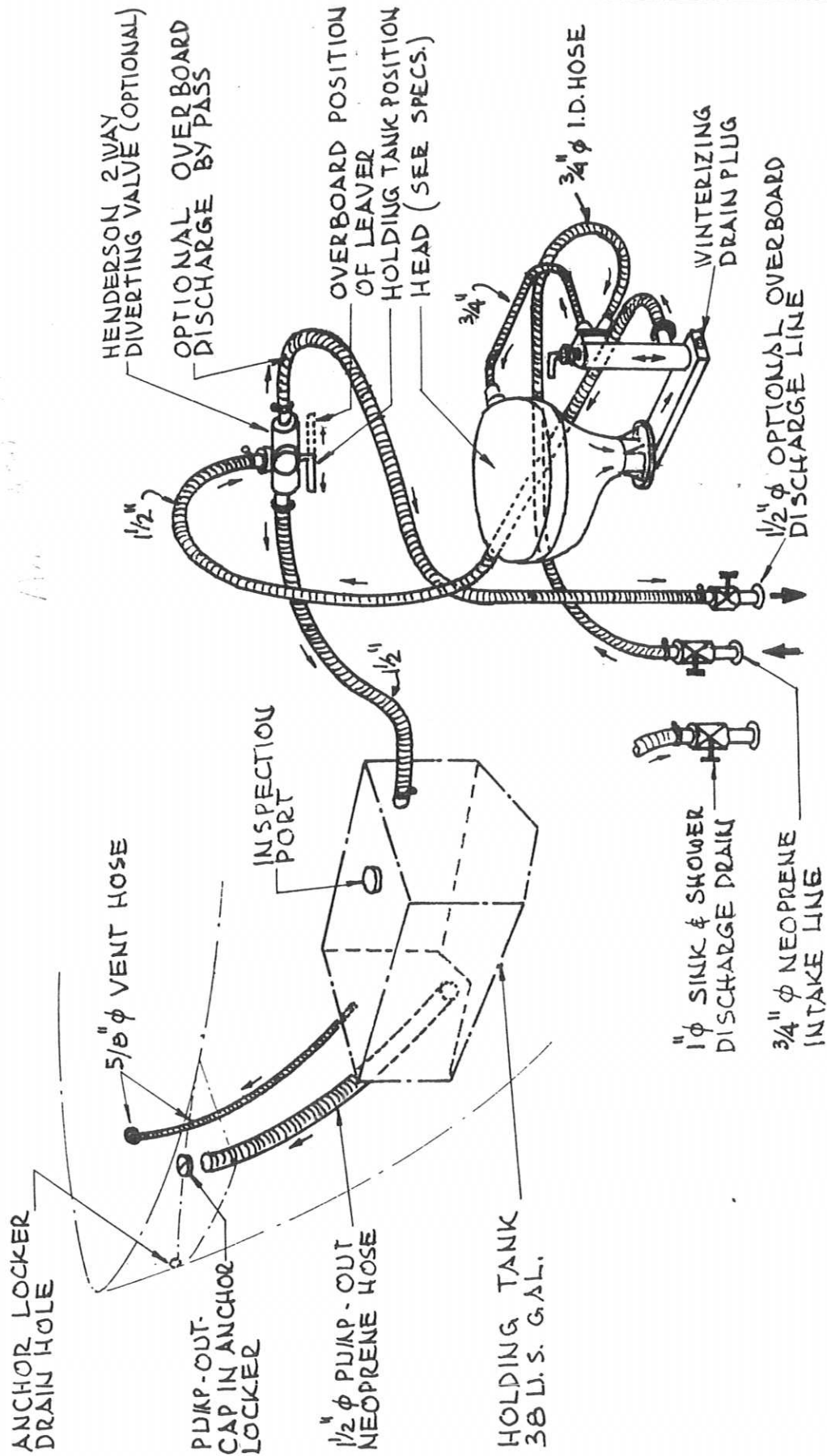
DWG. No  
**20A**



# ENGINE COOLING CIRCUIT

DWG. No

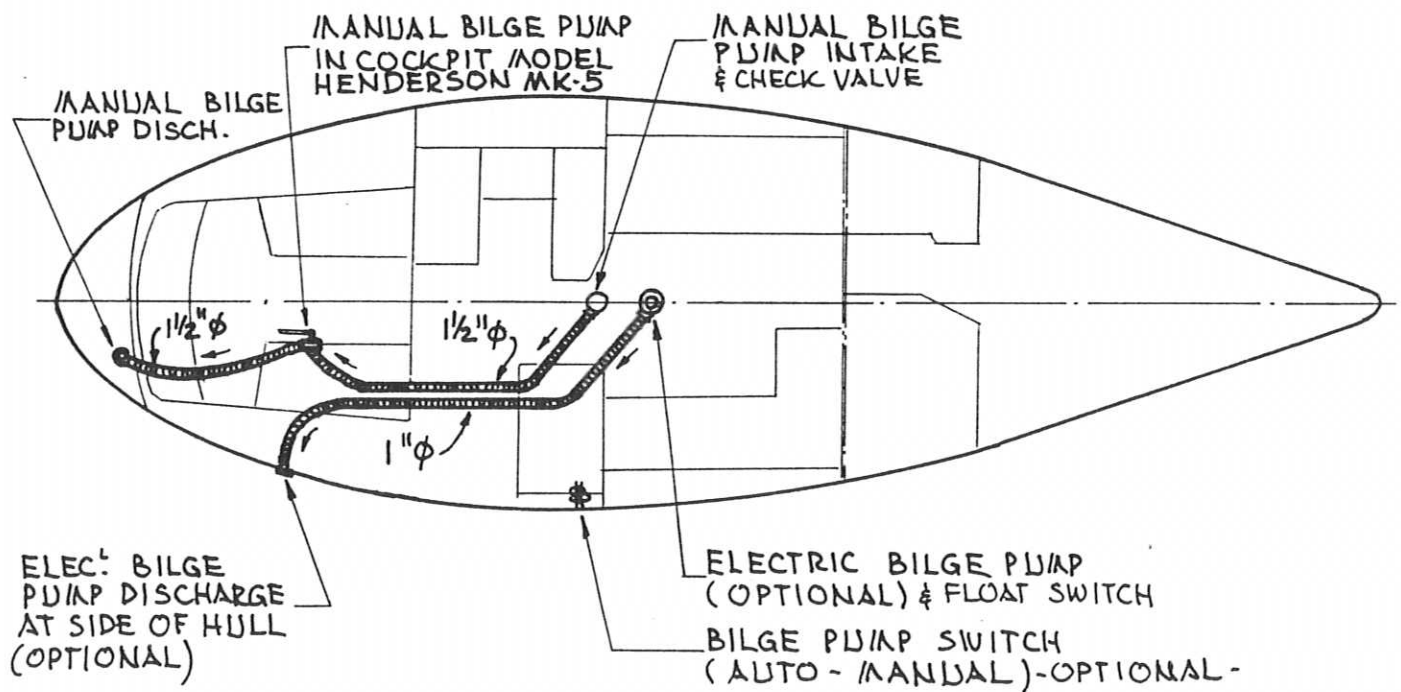
21



# TOILET PLUMBING SYSTEM

DWG. No

22



# BILGE PUMP SYSTEM

DWG. No

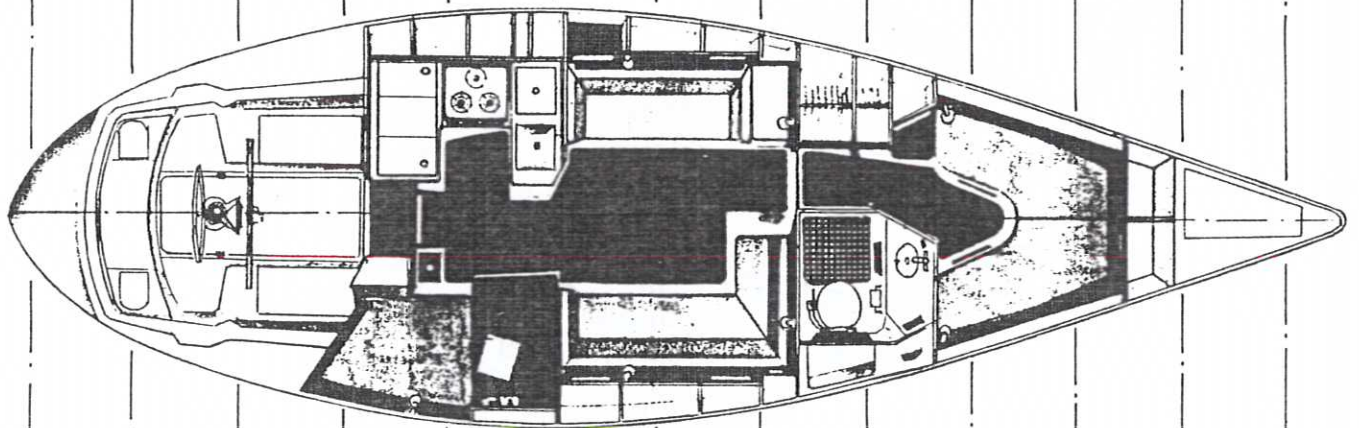
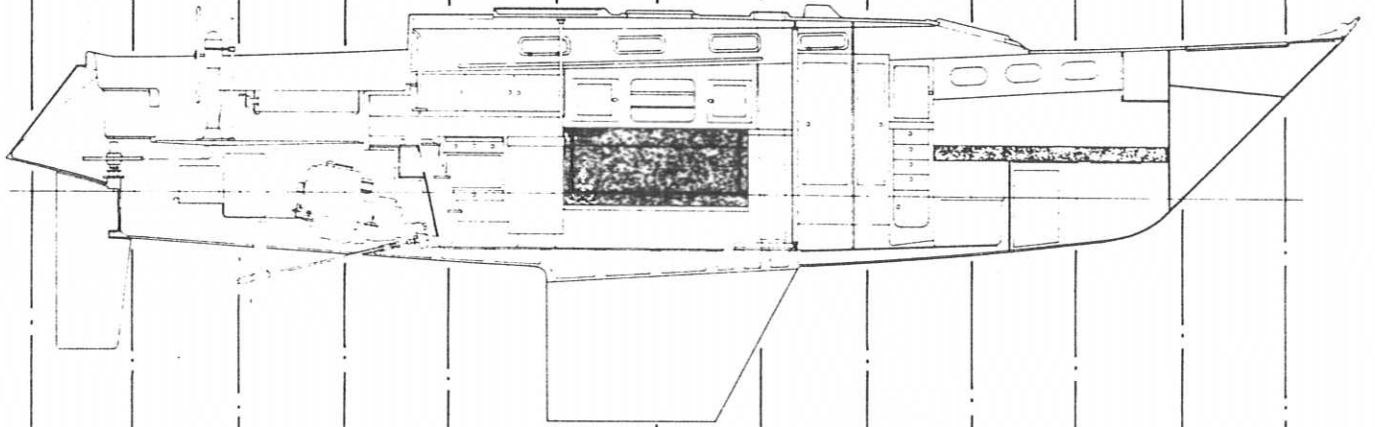
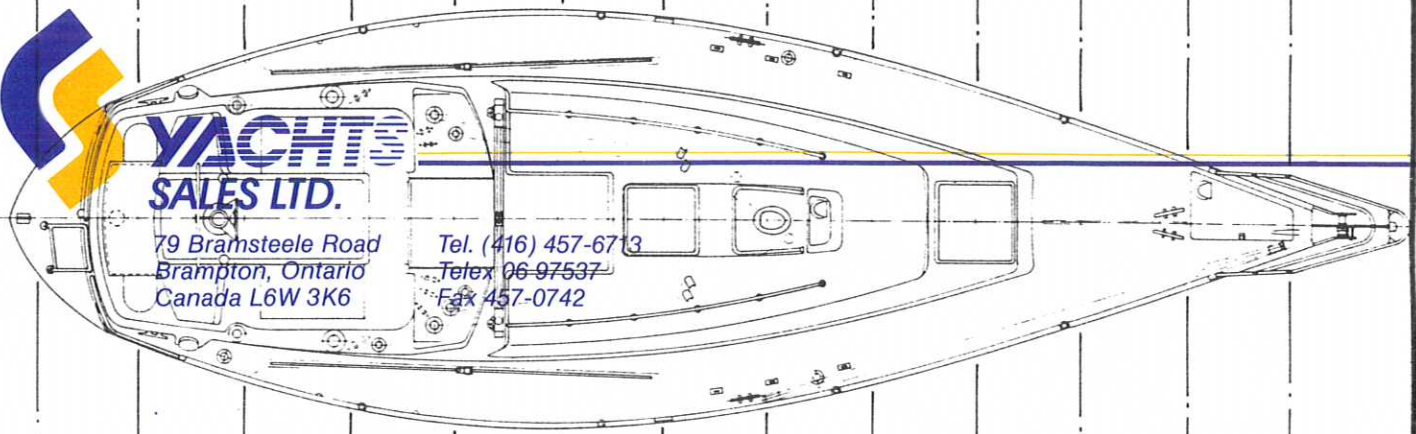
23



**YACHTS  
SALES LTD.**

79 Bramsteele Road  
Brampton, Ontario  
Canada L6W 3K6

Tel. (416) 457-6713  
Telex 06-97537  
Fax 457-0742



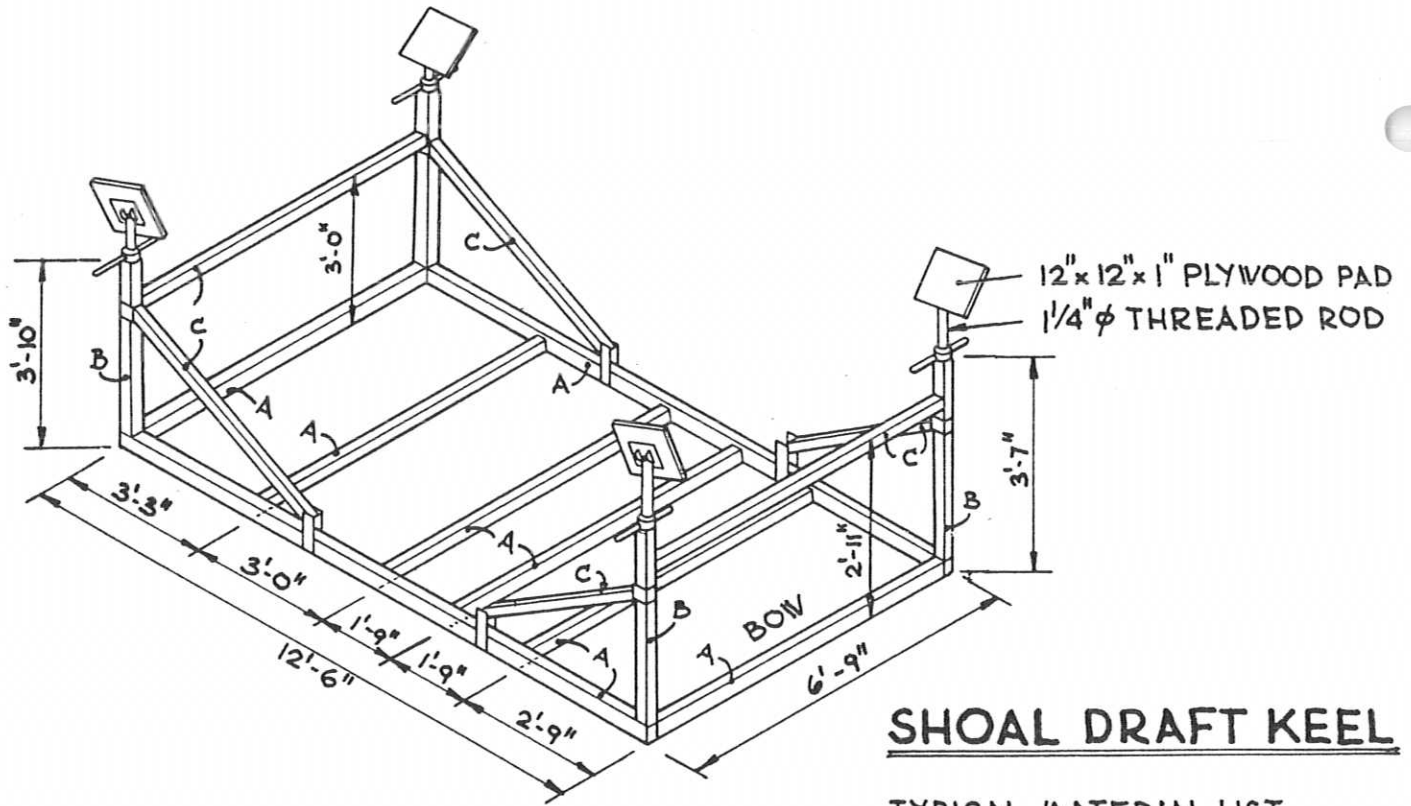
11 10 9 8 7 6 5 4 3 2 1 0 A



**DECK PLAN-ACCOMMODATIONS**

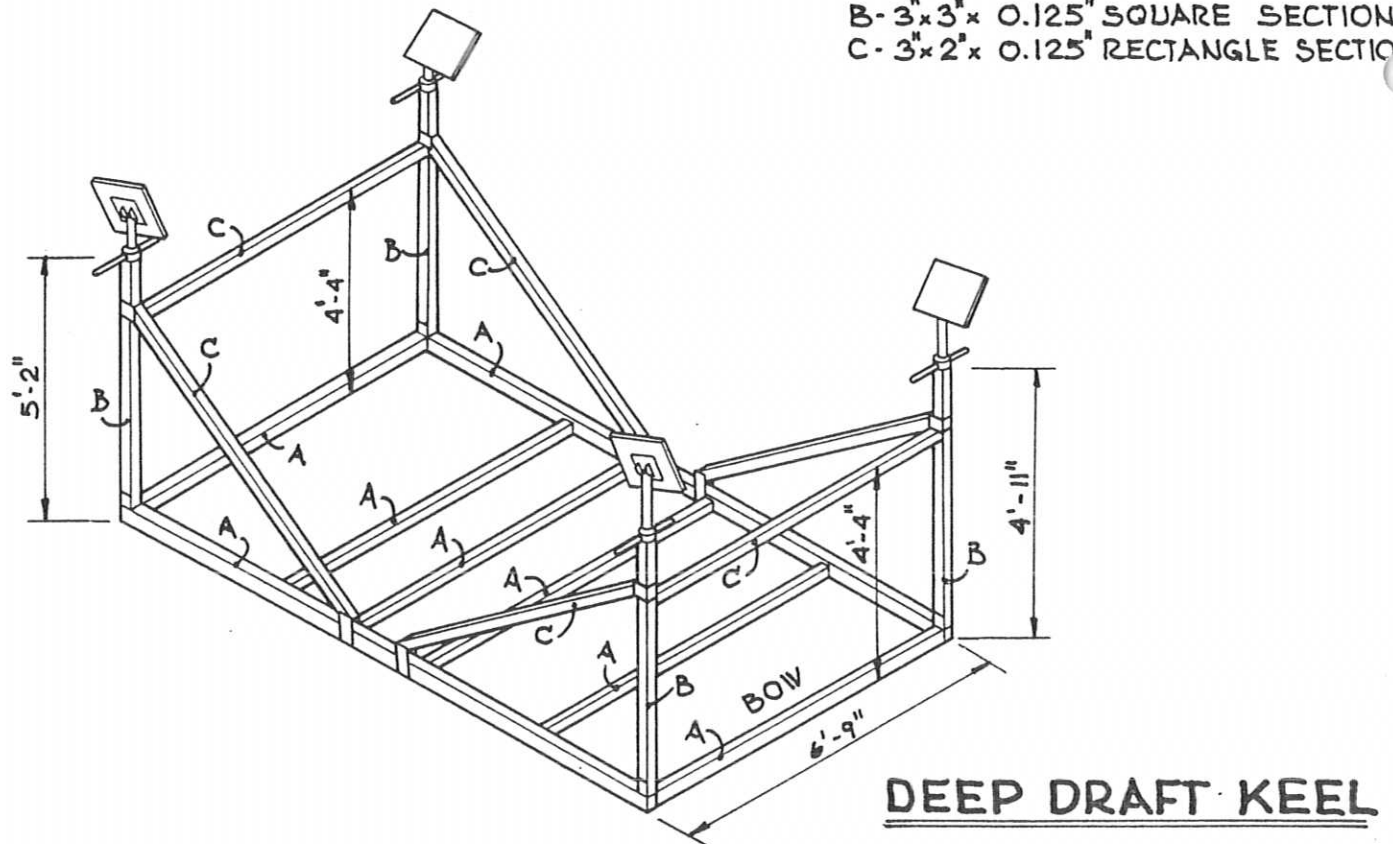
DWG. No

**24**



TYPICAL MATERIAL LIST

- A- 4" x 3" x 0.150" RECTANGLE SECTION
- B- 3" x 3" x 0.125" SQUARE SECTION
- C- 3" x 2" x 0.125" RECTANGLE SECTION





79 Bramstede Road  
 Brampton, Ontario  
 Canada L6R 3K6  
 Tel. (416) 457-6713  
 Telex 06 97537  
 Fax 457-0742

ENGINE	GEAR-BOX	DRIVE	LUBRICATING OIL	TRANSMISSION OIL	DRIVE LUBRICANT	ENGINE COOLANT	FUEL FILTERS
YANMAR 8HP	W-30	STRAIGHT DRIVE	10W-30 SHELL RIMULA	10W-30 SHELL RIMULA	10W-30 SHELL RIMULA	RAW WATER	CAV MODEL 96
BLUKH 20HP	W-30	STRAIGHT DRIVE	10W-30 SHELL RIMULA	10W-30 SHELL RIMULA	10W-30 SHELL RIMULA	RAW WATER	CAV MODEL 96 GROSS- MECHANICAL
WESTER- BEKE 30 & 33	PARAGON HYDRAULIC	V-DRIVE WALTERV-10 2:1	SHELL ROTELLA-T SAE 30	TRANSMISSION FLUID TYPE 'A' SHELL DONAX T.G.	SHELL ROTELLA-T SAE 30 (1 PINT)	FRESH- WATER 50/50% ANTIFREEZE	PRIMARY CAV FILTER TRAP 120 SECONDARY GROSS- MECHANICAL

RAW WATER FILTER FOR WESTERBEKE 30 & 33 IS A "PERCO"



# LUBRICANTS, COOLANTS & FILTERS

TABLE

1

\* OPTIONAL FIXTURE

GROUP	LOCATION	Pcs.	BULB TYPE
NAVIGATION LIGHTS	BOW BI-COLOUR	1	AHELMAN & SCHLATTER 12V-25W 2 PIN OFFSET BAYONET 904-0002
	STERN	1	AHELMAN & SCHLATTER 12V-10W FESTOON 904-00200
	* MASTHEAD TRI-COLOUR	1	GUEST 12V-10W GUEST REPLACEMENT # P 13612
	MASTHEAD ANCHOR	1	AHELMAN & SCHLATTER 12V-10W (DISCONTINUED)
	* MASTHEAD STROBE	1	QUARTZ HALOGEN A-35 GUEST REPLACEMENT # P-17401
	STEERING LIGHT	1	AHELMAN & SCHLATTER 12V-10W FESTOON 904-00200
	DECK LIGHT	1	AQUA SIGNAL -HALOGEN TYPE OSRAM # 64425 -12V-20W
	OVERHEAD DOME LIGHTS	4	WHITE GE-1142 QL-7
		2	RED GE 94 SJ4
	BULKHEAD LIGHTS	7	SL 94 2PIN BAYONET
ACCOMMODATION	CHART TABLE LIGHT	1	GE 1816 1PIN BAYONET
	GALLEY FLUORESCENT	1	F8 T5 CW
	COCKPIT LIGHT	1	WINDEX BULB TYPE OSRAM # 12V 3W
	COMPASS LIGHT	1	DUAL 40000 HR BULB ASSY #A12925

NOTE

LIGHT BULB SIZES MAY VARY. WHEN REPLACING A BULB, TAKE THE EXPIRED BULB TO DEALER TO ENSURE SAME SIZE IS OBTAINED.



# ELECTRICAL LIGHTS

TABLE

2

BOAT MODEL	WATER TANK CAPACITIES		FUEL TANK CAPACITIES		HOLDING TANK CAPACITIES			TOILET TYPE	STOVE TYPE		
	U.S. GAL.	IMP. GAL.	LITRE	U.S. GAL.	IMP. GAL.	LITRE	U.S. GAL.			IMP. GAL.	LITRE
CS-27	19	16	73	14	12	54	38	32	145	MARINE HEAD	2-BURNER ALCOHOL
CS30	30	25	113.7	21.6	18	82	30	25	113.7	MARINE HEAD	2-BURNER W/OVEN PROPANE
CS33	60	50	227	25	21	95	38	32	145	MARINE HEAD	2 BURNER W/OVEN PROPANE
CS36	100	83	377	42	35	159	38	32	145	MARINE HEAD	3 BURNER WITH OVEN PROPANE



# STANDARD TANK CAPACITIES AND PERTINENT DATA

TABLE  
3



# STAINLESS STEEL COMPONENTS, MAST, BOOM, MAIN SAIL CUTBACKS

TABLE  
4

MODEL	PIPE = Ø HT.	PIPE = Ø HT.	STANCHION = Ø	MAST DIMENSION APPROX.	TRACK SIZE	TOP OF SAIL ENTRY SLOT ABOVE BACK BAND	BOOM DIMENSIONS	BOLT ROPE SIZE	TACK PIN CUT- BACK	TACK PIN HT.	CLEW PIN CUT BACK	CLEW PIN HT.	SPINNER TRACK DIMENSION	LENGTH
CS27	1" 316 STAINLESS STEEL	1" 316 STAINLESS STEEL	1" x 25"	33'-0"	5/8" H.A. # 89		10'-4"	3/8"	2"	1 1/2"				
CS30	1" 316 S.S.	1" 316 S.S.	1" x 25"	48'-0"	3/4" FLAT INSET SLIDE, HOLT ALLEN # 90		12'-2"	3/8"	1 1/2"	2"	0		STANDARD ISO/MAT CASTING REQU. P.	
CS33	1" 316 S.S.	1" 316 S.S.	1" x 25"	50'-0"	3/4" FLAT INSET SLIDE, H.A. # 90		11'-10"	3/8"	1 1/2"	2"	0		- 11 -	
CS36	1" 316 S.S.	1" 316 S.S.	1" x 25"	55'-0"	7/8" FLAT INSET SLIDE, H.A. # 91		14'-0"	3/8"	1 1/2"	2"	0		- 11 -	

**NOTE**

ALL CUT BACK DIMENSIONS ARE TAKEN FROM 'P' & 'E' LIMITS RESPECTIVELY.

\* OPTIONAL COMPONENTS.

0 CLEW SLUG PROVIDED - FITS 3/8"



# CS36 STANDING RIGGING

TABLE

5

ITEM	NO	LENGTH HEAD TO PIN	SIZE & MATERIAL	UPPER END FITTING	LOWER END FITTING
FORESTAY	1	50'-10"	5/16" $\phi$ 1x19 SS WIRE	ISO/AT TERMINAL CUP	MERRIMAN TURN-BUCKLE No 7854-101620, 5/8" $\phi$ -PIN
BACKSTAY	1	54'-7"	5/16" $\phi$ 1x19 SS WIRE	DITTO	DITTO
UPPER SHROUDS	2	49'-10"	1/4" $\phi$ 1x19 SS WIRE	DITTO	MERRIMAN TURN-BUCKLE 7854-081214 7/16" $\phi$ PIN
INTERMEDIATE SHROUDS	2	36'-2"	1/4" $\phi$ 1x19 SS WIRE	DITTO	DITTO
LOWER SHROUDS	4	FWD. 20'-11" AFT 21'-1"	1/4" $\phi$ 1x19 SS WIRE 1/4" $\phi$ 1x19 SS WIRE	DITTO DITTO	DITTO DITTO
UPPER LIFE LINES	2	—	1/4" $\phi$ 7x7 SS WIRE VINYL COATED WITH TURN BUCKLE	—	—
LOWER LIFE LINES	2	—	1/4" $\phi$ 7x7 SS WIRE VINYL COATED WITH TURN BUCKLE	—	—



# CS36 RUNNING RIGGING

TABLE

6

## STANDARD RIGGING LAYOUT

ITEM	NO.	LAYOUT	MATERIAL	END	BLOCKS
MAIN HALYARD	1	WIRE 54'-0" ROPE TAIL 55'-0"	WIRE - 3/16" φ 7x19 SS ROPE - 7/16" φ DACRON BRAID - YELLOW FLECK	SPLICED DIRECT INTO MERRINAN SHACKLE 390	WHIP
GENOA HALYARD	1	WIRE 55'-0" ROPE TAIL 53'-0"	WIRE - 1/4" φ 7x19 SS ROPE - 7/16" φ DACRON BRAID - BLUE FLECK	SPLICED DIRECT INTO MICRO FICO SNAP - SHACKLE NF-15000S	WHIP
TOPPING LIFT	1	ROPE 107'-0"	ROPE - 5/16" φ DACRON BRAID - WHITE	SPLICED DIRECT INTO MICRO FICO SNAP - SHACKLE NF-11000S	WHIP
MAIN SHEET	1	ROPE 90'-0"	ROPE - 7/16" φ DACRON BRAID - WHITE	SOFT EYE FOR BECKET OF BLOCK	WHIP
GENOA SHEETS	2	ROPE 55'-0"	ROPE - 5/8" φ DACRON BRAID - BLUE FLECK	WHIP	WHIP
FLATTENING REEF FIRST REEF CLEW OUTHAUL	1 1 1	ROPE 37'-0" ROPE 47'-0" ROPE	ROPE 3/8" φ DACRON-GREEN- ROPE 3/8" φ DACRON-WHITE ROPE 3/8" φ DACRON-BLACK	FLECK WHIP YELLOW FL.	WHIP

## OPTIONAL RIGGING LAYOUT

SPINNAKER HALYARD	1	ROPE 115'-0"	ROPE 7/16" φ DACRON BRAID - RED FLECK	SPLICED DIRECT INTO MICRO FICO SNAP SHACKLE NF-15000S	WHIP
SPINNAKER POLE LIFT	1	ROPE 80'-0"	ROPE 3/8" φ DACRON BRAID - RED FLECK	SPLICED DIRECT INTO MICRO FICO SNAP - SHACKLE NF-11000S	WHIP
SPINNAKER SHEETS	2	ROPE 75'-0"	ROPE 1/2" φ DACRON BRAID - RED FLECK	SPLICED DIRECT INTO MICRO FICO SNAP SHACKLE NF-15000S	WHIP
SPINNAKER GUY	2	ROPE 45'-0"	ROPE 1/2" φ LOW STRETCH DACRON BRAID - RED FLECK	SPLICED DIRECT INTO LEWINAR SNAP SHACKLE 5201	WHIP
SPINNAKER FOREGUY	1	ROPE 56'-0"	ROPE 7/16" φ DACRON BRAID - RED FLECK	SPLICED DIRECT INTO MICRO FICO SNAP SHACKLE NF11000S	WHIP
MAIN SHEET COACH ROOF	1	ROPE 90'-0"	ROPE - 7/16" φ DACRON BRAID - WHITE	SOFT EYE FOR BECKET OF BLOCK	WHIP

LEWINAR 9257 FIDDLE  
LEWINAR 9267 FIDDLE  
& BECKET

NICRO FICO 10124 B  
SNATCH / SNAP BLOCK

NICRO FICO 10124 B  
SNATCH / SNAP BLOCK

LEWINAR 9218 SINGLE  
WITH SNAP SHACKLE



# CS 36 BLOCKS

TABLE

7

USAGE	DESCRIPTION	QUANTITY
• STANDARD- /MAIN SHEET • ON COACHROOF	LEWMAR N° 9267 FIDDLE BLOCK WITH BECKET	1
	LEWMAR N° 9217 SINGLE BLOCK	4
JIB SHEET	MERRIMAN-HOLBROOK GENOA LEAD CAR - N° 1120-130. BARLOW GIBB N° 2036 - 2 FOOT BLOCKS	2
/MAIN & GENOA HALYARDS	STANDARD ISO/AT	1
/MAIN BOOM LIFT	ISO/AT EXIT BOX & CLEAT ON /MAST	1
BOOM VANG	LEWMAR FIDDLE BLOCK WITH SNAP SHACKLE 2 BLOCKS N° 9258 N° 9288 WITH CAN CLEAT	1 (OPTIONAL)
SPINNAKER GEAR	NICRO FICO TRUNNION SNATCH BLOCK N° 10124B. SPRING LOADED LEAD BLOCK - LEWMAR N° 8120	2
TOPPING LIFT	3/8" DACRON BRAID WITH SNAP SHACKLE	1
SLAB REEFING	3/8" DACRON BRAID, INTERNAL ON BOOM W. NICRO FICO SNATCH BLOCK AT /MAST BASE N.F. # 10120 B	2

MODEL	BACKSTAY SIZE	BACKSTAY BREAKING STRENGTH (LBS)	PRELOAD LIMIT 25%-35% OF BREAKING STRENGTH (LBS) WIRE LIMIT	ABSOLUTE PRELOAD LIMIT 40% OF BREAKING STRENGTH (LBS) ROD LIMIT
CS-27	3/16" SSW	4700	1500	1880
CS-30				3300
CS-33	1/4" SSW	8200	2700	5500
CS-36	5/16" SSW	12500	4100	

NOTE: ABSOLUTE LIMIT (40% BREAKING STRENGTH) SHOULD ONLY BE USED WITH ROD - BACKSTAY & FORESTAY, NOT STAINLESS STEEL WIRE (SSW)

# RECOMMENDED BACKSTAY PRELOAD LIMITS



# ENGINES AND PROPELLERS

TABLE

9

MODEL	ENGINE	TRANSMISSION	STANDARD 2 BLADE PROPELLER	OPTIONAL FOLDING PROPELLER
CS-27	YANMAR 8HP	STRAIGHT DRIVE 2:1	13" x 8" x 1" L.H.	13" x 8" x 1" L.H. / ARTEC
CS-30	VOLVO 18HP	STRAIGHT DRIVE 2.6:1		
CS-33	BUKH 20HP	STRAIGHT DRIVE 2:1	15" $\phi$ x 15" p. x 1" $\phi$ R.H.	18" x 12" x 1" R.H. / ARTEC 16 1/2" x 11" x 1" R.H. GORI
CS-36	WESTERBEKE 30 -11- 33	V-DRIVE 2:1 V-DRIVE 2:1	16" x 13" x 1" L.H. 16" x 12" x 1" L.H.	{ 18" x 12" x 1" L.H. / ARTEC 16 1/2" x 11" x 1" L.H. GORI 18" x 10" x 1" L.H. GORI

NOTE:

e.i 18" DIAMETER x 12" PITCH x 1" DIA. BORE LEFT HAND ROTATION

